

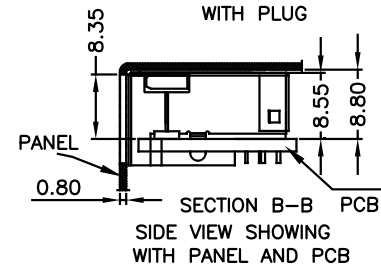
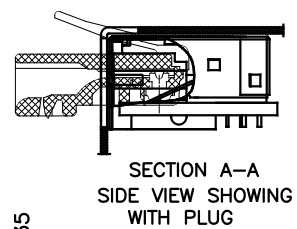
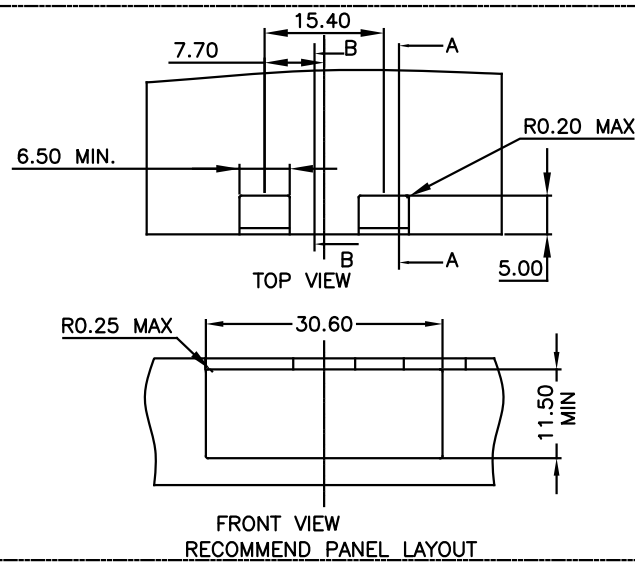
REVISIONS			
REV	DESCRIPTION, ECN, EAR NO.	DATE	APP'D
A	INITIAL RELEASE	APR30/21	K.T

NOTES:
ELECTRICAL:

- VOLTAGE RATING: 125 VAC.
- CURRENT RATING: 1.25 AMPS PER CONTACT.
- INSULATING RESISTANCE: 500 MEGOHMS MINIMUM.
- DIELECTRIC STRENGTH: CONTACT TO CONTACT, 1,000VAC, 60Hz, 1 MIN.
CONTACT TO LED, 1,500VAC, 60Hz, 1 MIN.
CONTACT TO SHIELD, 1,500VAC, 60Hz, 1 MIN.
LED TO SHIELD, 1,000VAC, 60Hz, 1 MIN.

5. CATEGORY 5E CHARACTERISTIC:

MHz	dB, MIN.	dB, MIN.	dB, MAX.
1.0	65	30	0.1
4.0	65	30	0.1
8.0	64.9	30	0.1
10.0	63	30	0.1
16.0	58.9	30	0.2
20.0	57	30	0.2
25.0	55	30	0.2
31.25	53.1	30	0.2
62.5	47.1	24.1	0.3
100.0	43	20	0.4



MECHANICAL:

- SHIELD: STAINLESS STEEL, WITH TIN-DIP ON SOLDER TABS.
- HOUSING: HIGH TEMP THERMOPLASTIC, UL 94V-0, BLACK
- INSERT: HIGH TEMP THERMOPLASTIC UL 94V-0.
- PCB: FR-4.
- CONTACT: PHOSPHOR BRONZE.
SELECTIVE GOLD PLATING FOR MATING SURFACE,
SEE AMPHENOL PART NUMBER FOR DETAIL.
50u" NICKEL UNDERPLATE
100u" MATTE TIN PLATING ON CONTACT SOLDER TAIL.

ENVIRONMENTAL:

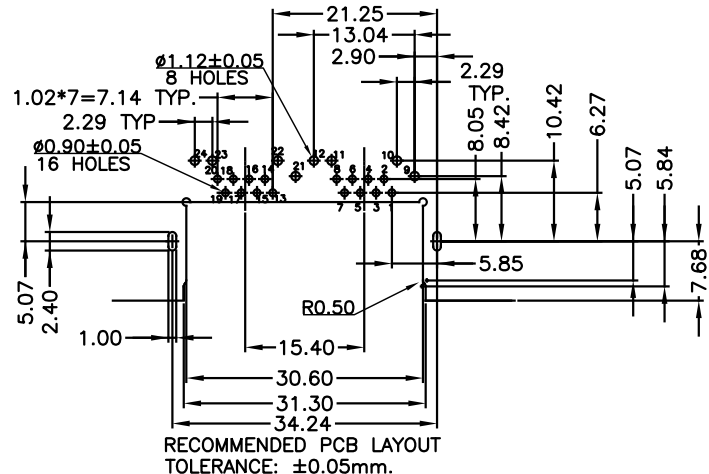
- STORAGE: -40° TO +85°.
 - OPERATION: -55° TO +85°.
- MATES WITH MODULAR PLUG CONFORMING TO TIA 1096.
RECOMMENDED SOLDER PROCESS: WAVE SOLDER, PEAK TEMPERATURE 260° FOR 5~8 SECONDS

AMPHENOL PART NUMBER: RJE72-288-6XXX

- GOLD PLATING OPTION _____
- 1=6u" GOLD PLATING _____
- 2=15u" GOLD PLATING _____
- 3=30u" GOLD PLATING _____
- 4=50u" GOLD PLATING _____
- OPTIONS (SEE BELOW TABLE 1)
- REFER TO SHEET 2 FOR LED OPTIONS

TABLE 1:

RJE722886XX1	3.18	2.36
RJE722886XX2	2.27	1.57
AMPHENOL P/N:	DIM A	RECOMMEND PCB THICKNESS



UNLESS SPECIFIED OTHERWISE	DRAWN	JAMISON C	APR30/21
PRIMARY UNITS MILLIMETERS	CHECKED	L.CHAN	APR30/21
SECONDARY	M.E. APP'D		
REFERENCE IN PARENTHESES	Q.A. APP'D		
GENERAL TOLERANCES FOR MM	DWG APP'D	A.GREEN	APR30/21
1 DECIMAL PLACE ±0.5	ENG. REL. NO.		
2 DECIMAL PLACES ±0.30	REF.		
3 DECIMAL PLACES ±0.10	THIRD ANGLE PROJECTION		
ANGULAR DEGREE ±3°	DO NOT SCALE DRAWING		

Amphenol Canada Corp.
Commercial Products

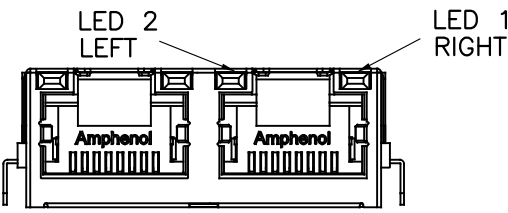
MODULAR JACK, 1X2 PORTS, 8 POSITIONS,
8 CONTACTS, SHIELDED WITHOUT TABS,
WITH LED, SINK PCB TYPE, TAB UP, CAT5E

DWG NO. P-RJE72-288-6XXX

CODE ID NO. 03554 | DWG SIZEN/A | SCALE FIT | SHEET 1 OF 2

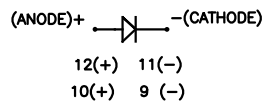
THIS DOCUMENT CONTAINS PROPRIETARY INFORMATION AND SUCH INFORMATION MAY NOT BE DISCLOSED TO OTHERS FOR ANY PURPOSE OR USED FOR MANUFACTURING PURPOSES WITHOUT WRITTEN PERMISSION FROM AMPHENOL CANADA CORP.

REVISIONS			
REV	DESCRIPTION, ECN, EAR NO.	DATE	APP'D
A	INITIAL RELEASE	APR30/21	K.T

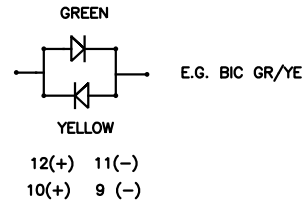


LED SCHEMATIC

SINGLE COLOUR LED



BI-COLOUR LED



EXAMPLE:

PART NUMBER RJE72-188-6XXX

↑
LED COLOR CODE



LED SPECIFICATIONS:

FORWARD VOLTAGE: 2.4 VOLTS MAX. @20mA
(FOR SINGLE COLOUR LED)
2.4 VOLTS MAX. @20mA
(FOR BI-COLOUR LED)
REVERSE VOLTAGE: 5.0 VOLTS MAX.
LUMINOUS INTENSITY: 4MCD MIN.
(AT If=20mA)
STORAGE TEMPERATURE: -40° TO 85° C
PLATING ON TAILS: TIN OR TIN/COPPER
ALLOY OVER SILVER

PRIMARY COLOR FOR BI-COLOR

LEDS IN STANDARD ANODE/
CATHODE CONFIGURATION IS:
RED-GREEN= RED
RED-YELLOW= RED
GREEN-YELLOW= GREEN
GREEN-ORANGE= GREEN

LEGEND

BIC=BI-COLOR LED
LOWC=LOW CURRENT LED
YE=YELLOW
GR=GREEN
RD=RED
OR=ORANGE

CODE	LED 2 (LEFT)	LED 1 (RIGHT)	CODE	LED 2 (LEFT)	LED 1 (RIGHT)	CODE	LED 2 (LEFT)	LED 1 (RIGHT)
0	BLOCKED	BLOCKED	9	GREEN	BLOCKED	J	BIC RD/GR	YELLOW
1	YELLOW	GREEN	A	BIC GR/YE	BIC GR/YE	K	YELLOW	BIC GR/OR
2	BLOCKED	GREEN	B	BIC RD/GR	BIC RD/GR	L	BIC GR/YE	RED
3	YELLOW	BLOCKED	C	BIC RD/GR	BIC GR/YE	M	RED	YELLOW
4	GREEN	YELLOW	D	GREEN	BIC GR/YE	P	GREEN	BIC RD/GR
5	GREEN	GREEN	E	YELLOW	BIC GR/YE	R	BIC GR/OR	GREEN
6	YELLOW	YELLOW	F	BIC GR/YE	YELLOW	T	RED	RED
7	RED	GREEN	G	BIC GR/OR	BIC GR/OR	V	BIC RD/GR	GREEN
8	GREEN	RED	H	BIC GR/YE	GREEN			

UNLESS SPECIFIED OTHERWISE	DRAWN	JAMISON C	APR30/21
PRIMARY UNITS MILLIMETERS	CHECKED	LCHAN	APR30/21
SECONDARY	M.E. APP'D		
REFERENCE IN PARENTHESES	Q.A. APP'D		
GENERAL TOLERANCES FOR MM	DWG APP'D	A.GREEN	APR30/21
1 DECIMAL PLACE ±0.5	ENG. REL. NO.		
2 DECIMAL PLACES ±0.30	REF.		
3 DECIMAL PLACES ±0.10	THIRD ANGLE PROJECTION		
ANGULAR DEGREE ±3°	DO NOT SCALE DRAWING		

Amphenol Canada Corp. Commercial Products	
MODULAR JACK, 1X2 PORTS, 8 POSITIONS, 8 CONTACTS, SHIELDED WITHOUT TABS, WITH LED, SINK PCB TYPE, TAB UP, CAT5E	
DWG NO. P-RJE72-288-6XXX	REV A
CODE ID NO. 03554	DWG SIZE/A SCALE FIT SHEET 2 OF 2