



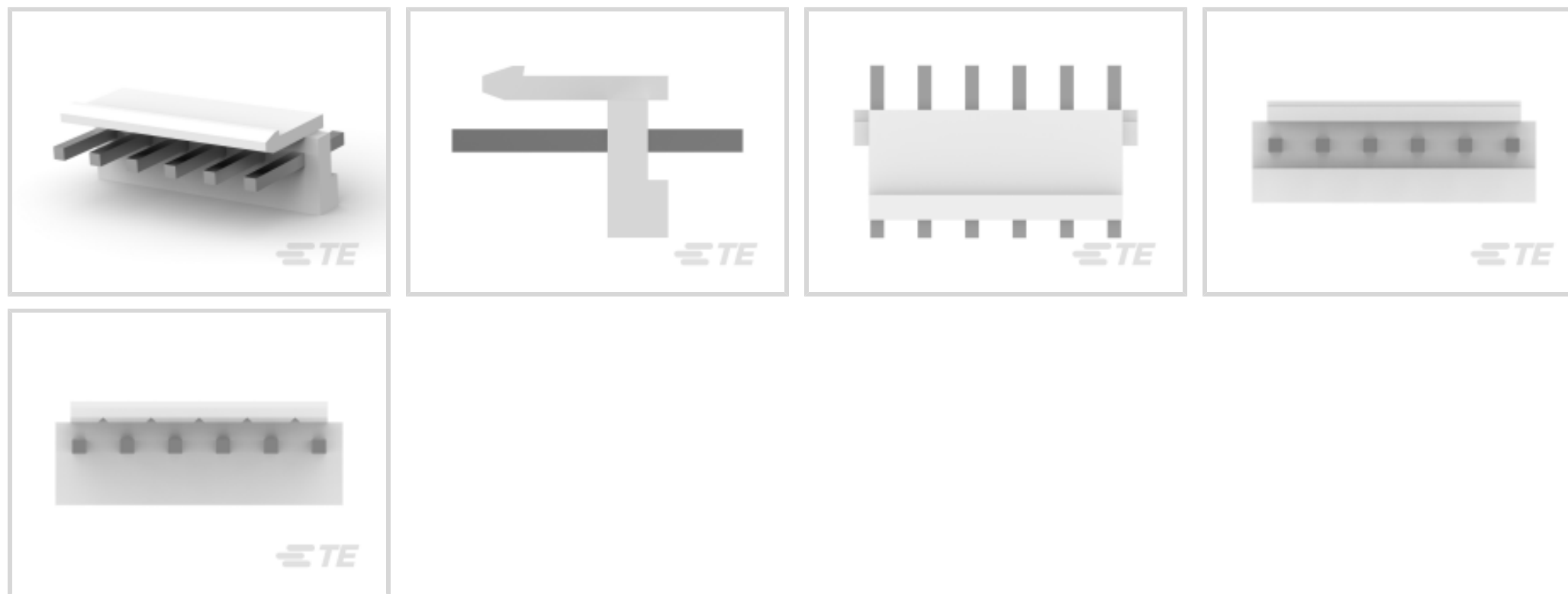
Economy Power

TE Internal #: 1-1123723-6

PCB Mount Header, Vertical, Wire-to-Board, 6 Position, 3.96 mm [.156 in] Centerline, Partially Shrouded, Tin (Sn), Economy Power

[View on TE.com >](#)

Connectors > PCB Connectors > PCB Headers & Receptacles



PCB Connector Type: **PCB Mount Header**

PCB Mount Orientation: **Vertical**

Connector System: **Wire-to-Board**

Number of Positions: **6**

Centerline (Pitch): **3.96 mm [.156 in]**

Features

Product Type Features

Connector Shape	Rectangular
PCB Connector Type	PCB Mount Header
Connector System	Wire-to-Board
Header Type	Partially Shrouded
Sealable	No
Connector & Contact Terminates To	Printed Circuit Board
Connector Product Type	Connector Assembly

Configuration Features

Number of Loaded Positions	6
PCB Mount Orientation	Vertical
Number of Positions	6
Number of Rows	1
Number of Power Positions	6

Electrical Characteristics

--	--



Operating Voltage	250 VDC
-------------------	---------

Body Features

Connector Profile	Low
-------------------	-----

Primary Product Color	Natural
-----------------------	---------

Contact Features

Contact Underplating Material	Nickel
-------------------------------	--------

Contact Underplating Material Thickness	.8 – 1.8 μm [31.5 – 70.86 μin]
---	---

Contact Size	1.14mm
--------------	--------

PCB Contact Termination Area Plating Material Thickness	1 μm [39.37 μin]
---	---

Contact Shape & Form	Square
----------------------	--------

Contact Layout	Inline
----------------	--------

Contact Mating Area Length	7.7 mm[.303 in]
----------------------------	-----------------

Contact Base Material	Brass
-----------------------	-------

Contact Mating Area Plating Material	Tin (Sn)
--------------------------------------	----------

Contact Mating Area Plating Material Thickness	1 μm [39.37 μin]
--	---

Contact Type	Tab
--------------	-----

Contact Current Rating (Max)	8 A
------------------------------	-----

PCB Contact Termination Area Plating Material	Tin
---	-----

Termination Features

Termination Post & Tail Length	3.7 mm[.146 in]
--------------------------------	-----------------

Square Termination Post & Tail Dimension	1.14 mm[.045 in]
--	------------------

Termination Method to PCB	Through Hole - Solder
---------------------------	-----------------------

Mechanical Attachment

Mating Retention Type	Locking Tab
-----------------------	-------------

Mating Alignment Type	Polarization
-----------------------	--------------

PCB Mount Alignment	Without
---------------------	---------

Mating Retention	With
------------------	------

PCB Mount Retention	Without
---------------------	---------

Connector Mounting Type	Board Mount
-------------------------	-------------

Mating Alignment	With
------------------	------

Housing Features

Centerline (Pitch)	3.96 mm[.156 in]
--------------------	------------------



Housing Material	PBT GF
------------------	--------

Dimensions

Connector Width	8.5 mm[.334 in]
PCB Thickness (Recommended)	1.6 mm[.063 in]
Connector Height	9.2 mm[.36 in]
Connector Length	23.76 mm[.935 in]

Usage Conditions

Operating Temperature (Max)	105 °C[221 °F]
Operating Temperature Range	-30 – 105 °C[-22 – 221 °F]

Operation/Application

Circuit Application	Power
---------------------	-------

Industry Standards

UL Rating	Recognized
Glow Wire Rating	Standard Part - Not Glow Wire
UL Flammability Rating	UL 94V-0

Packaging Features

Packaging Quantity	1500
Packaging Method	Bag

Product Compliance

[For compliance documentation, visit the product page on TE.com>](#)

EU RoHS Directive 2011/65/EU	Compliant
EU ELV Directive 2000/53/EC	Compliant
China RoHS 2 Directive MIIT Order No 32, 2016	有害物质含量符合标准要求 No Restricted Substance(s) Above Threshold
EU REACH Regulation (EC) No. 1907/2006	Current ECHA Candidate List: JUNE 2025 (250) Candidate List Declared Against: JUNE 2025 (250) Does not contain REACH SVHC
Halogen Content	Not Low Halogen - contains Br or Cl > 900 ppm.
Solder Process Capability	Wave solder capable to 265°C

Product Compliance Disclaimer

This information is provided based on reasonable inquiry of our suppliers and represents our current actual knowledge based on the information they provided. This information is subject to change. The part numbers that TE has identified as EU RoHS compliant have a maximum concentration of 0.1% by weight in homogenous materials for lead, hexavalent chromium, mercury, PBB, PBDE, DBP, BBP, DEHP, DIBP, and 0.01% for cadmium, or qualify for an exemption to these limits as defined in the Annexes of Directive 2011/65/EU (RoHS2). Finished electrical and electronic equipment products will be CE marked as required by Directive 2011/65/EU. Components may not be CE marked. Additionally, the part numbers that TE has identified as EU ELV compliant have a maximum concentration of 0.1% by weight in homogenous materials for lead, hexavalent chromium, and mercury, and 0.01% for cadmium, or qualify for an exemption to these limits as defined in the Annexes of Directive 2000/53/EC (ELV). Regarding the REACH Regulation, the information TE provides on SVHC in articles for this part number is based on the latest European Chemicals Agency (ECHA) 'Guidance on requirements for substances in articles' posted at this URL: <https://echa.europa.eu/guidance-documents/guidance-on-reach>

Compatible Parts



TE Part # 1123721-1
EP CONN. REC CONTACT



TE Part # 2316952-6
3.96 EP HDR ASSY 6P, NO PIN 2,3,5



TE Part # 2-1744036-6
06P ECONOMY POWER .200 CL HSG



TE Part # 1744544-6
EP II TPA 06P, BLACK



TE Part # 2-2316952-0
3.96 EP HDR ASSY 10P, NO PIN 3,5,7,9



TE Part # 2316952-4
3.96 EP HDR ASSY 4P, NO PIN 2,3



TE Part # 2132781-6
06P EP-II HOUSING, NATURAL



TE Part # 3-2316952-0
3.96 EP HDR ASSY 10P, NO PIN 7,9



TE Part # 1-1123722-6
3.96 EP PLUG HSG 6P(NATURAL)



TE Part # 1-2316952-6
3.96 EP HDR ASSY 6P, NO PIN 2,4



TE Part # 1744416-6
6 POS EP II HSG, GLOW WIRE



TE Part # 1123721-2
ECONOMY POWER CONN REC CONT



TE Part # 1744496-6
06P EP-II HOUSING, BLUE



Also in the Series | Economy Power



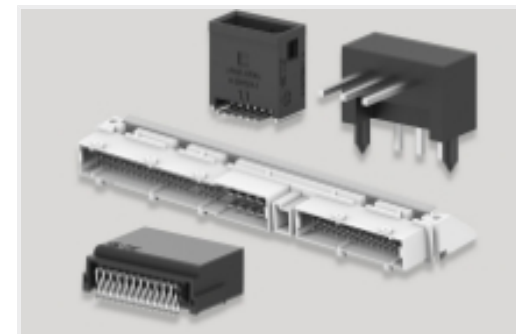
Connector Contacts(13)



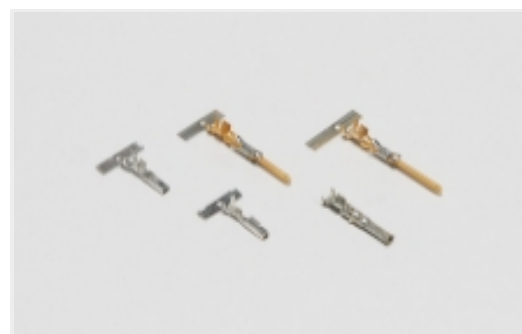
Connector Hardware(2)



Insertion & Extraction Tools(1)



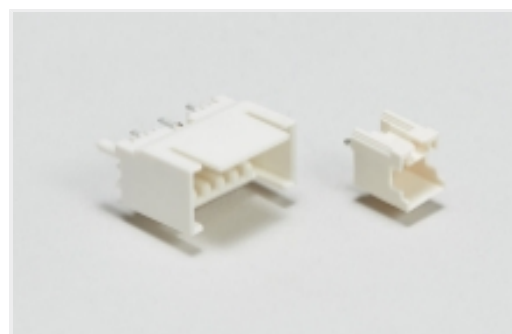
PCB Headers & Receptacles(463)



Power Contacts(7)



Rectangular Power Connectors(547)



Wire-to-Board Headers & Receptacles (463)

Customers Also Bought



TE Part #CAT-104MTA-PRUSH
PCB Header: Polyester, Right Angle, Unshrouded



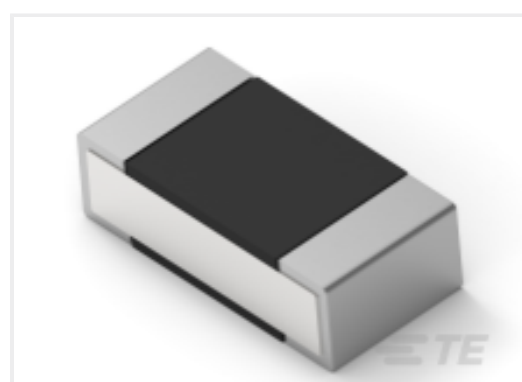
TE Part #1-1123722-6
3.96 EP PLUG HSG 6P(NATURAL)



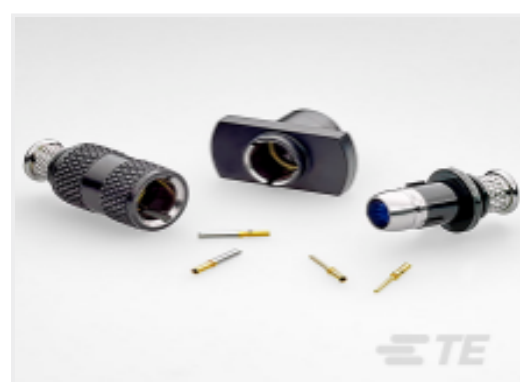
TE Part #1761987-9
ReceptacleConnAssm38PosTape/Re



TE Part #2110487-1
QSFP Cage, Solder Leg, No HS Opening



TE Part #6-2176311-6
RP 1E 0.1W 5K49 0.1% 25PPM 1K RL



TE Part #2226920-2
NETT WARRIOR RECEPTACLE



TE Part #2368182-4
RA SMC2.5 Potting header_4P



TE Part #L9000014-01
Antenna Chip T&R 2.45GHz SMT



TE Part #Y72541-09-98PAV004
HERM RECP



Documents

Product Drawings

[3.96 EP HDR ASSY 6P\(NATURAL\)](#)

English

CAD Files

[3D PDF](#)

3D

Customer View Model

[ENG_CVM_CVM_1-1123723-6_AD_c-1-1123723-6-ad.2d_dxf.zip](#)

English

Customer View Model

[ENG_CVM_CVM_1-1123723-6_AD_c-1-1123723-6-ad.3d_igs.zip](#)

English

Customer View Model

[ENG_CVM_CVM_1-1123723-6_AD_c-1-1123723-6-ad.3d_stp.zip](#)

English

By downloading the CAD file I accept and agree to the [Terms and Conditions](#) of use.

Datasheets & Catalog Pages

[7-1773458-5_ECONOMY_POWER_QRG](#)

English

Product Specifications

[Application Specification](#)

Japanese

[Application Specification](#)

English

[Application Specification](#)

English

Instruction Sheets

[Instruction Sheet \(non U.S.\)](#)

Japanese

[Economy Power \(EP\) Connector](#)

Japanese

Agency Approvals

[VDE Certificate](#)

English