



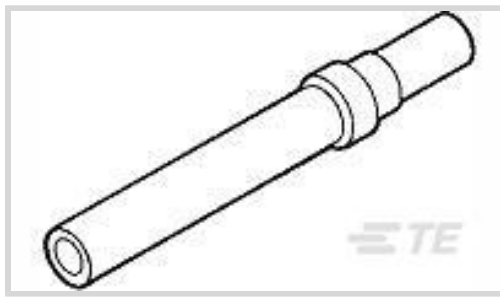
AMPLIMITE

TE Internal #: 1218267-1

Gold (Au), Socket Contact, 18 AWG, .8 – .9 mm² Wire, Size 20, Crimp, Copper Alloy, Signal, -55 – 125 °C [-67 – 257 °F]

[View on TE.com >](#)

Connectors > Contacts > Connector Contacts



Contact Type: **Socket**

Contact Mating Area Plating Material: **Gold (Au)**

Contact Size: **Size 20**

Wire Size: **.8 – .9 mm²**

Features

Contact Features

Contact Underplating Material	Nickel
Contact Type	Socket
Contact Mating Area Plating Material	Gold (Au)
Contact Size	Size 20
Contact Base Material	Copper Alloy
Contact Current Rating (Max)	7.5 A

Termination Features

Termination Method to Wire & Cable	Crimp
Product Terminates To	Wire & Cable

Mechanical Attachment

Wire Insulation Support	With
-------------------------	------

Dimensions

Compatible Insulation Diameter Range	.08 mm[2.11 in]
Wire Size	.8 – .9 mm ²

Usage Conditions

Operating Temperature Range	-55 – 125 °C[-67 – 257 °F]
-----------------------------	----------------------------

Operation/Application

Circuit Application	Signal
---------------------	--------

Packaging Features



Packaging Method	Package
Packaging Quantity	1000

Product Compliance

[For compliance documentation, visit the product page on TE.com>](#)

EU RoHS Directive 2011/65/EU	Compliant
EU ELV Directive 2000/53/EC	Compliant
China RoHS 2 Directive MIIT Order No 32, 2016	No Restricted Materials Above Threshold
EU REACH Regulation (EC) No. 1907/2006	Current ECHA Candidate List: JUNE 2025 (250) Candidate List Declared Against: JUNE 2025 (250) Does not contain REACH SVHC
Halogen Content	Low Halogen - Br, Cl, F < 900 ppm per homogenous material. Also BFR/CFR/PVC Free
Solder Process Capability	Not applicable for solder process capability

Product Compliance Disclaimer

This information is provided based on reasonable inquiry of our suppliers and represents our current actual knowledge based on the information they provided. This information is subject to change. The part numbers that TE has identified as EU RoHS compliant have a maximum concentration of 0.1% by weight in homogenous materials for lead, hexavalent chromium, mercury, PBB, PBDE, DBP, BBP, DEHP, DIBP, and 0.01% for cadmium, or qualify for an exemption to these limits as defined in the Annexes of Directive 2011/65/EU (RoHS2). Finished electrical and electronic equipment products will be CE marked as required by Directive 2011/65/EU. Components may not be CE marked. Additionally, the part numbers that TE has identified as EU ELV compliant have a maximum concentration of 0.1% by weight in homogenous materials for lead, hexavalent chromium, and mercury, and 0.01% for cadmium, or qualify for an exemption to these limits as defined in the Annexes of Directive 2000/53/EC (ELV). Regarding the REACH Regulation, the information TE provides on SVHC in articles for this part number is based on the latest European Chemicals Agency (ECHA) 'Guidance on requirements for substances in articles' posted at this URL: <https://echa.europa.eu/guidance-documents/guidance-on-reach>

Compatible Parts



Customers Also Bought



TE Part #031307-000
B-150-13



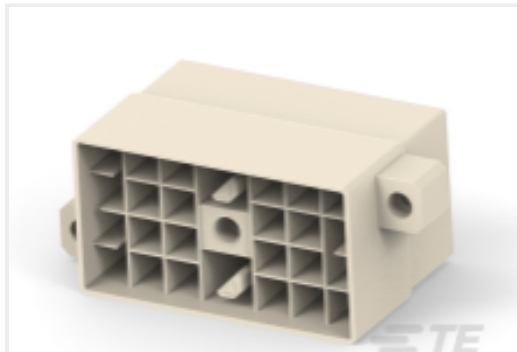
TE Part #212007-1
CONTACT PIN ASSY, SZ 8



TE Part #212013-1
AMPLIMITE,ASY,PIN CONTACT



TE Part #212014-1
CONTACT,SKT,PWR 8



TE Part #284873-1
24 POS CAP HOUSING ASS'Y



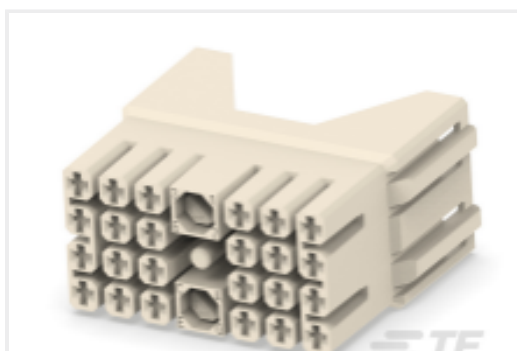
TE Part #1-917511-3
DYNAMIC D-3 REC CONT. 2L 0.76 L/P



TE Part #CAT-T4827-T273
TIMER, RECEPTACLE AND TAB



TE Part #1241388-2
AMP MCP 2.8K, CONTACT



TE Part #284874-1
24 POS PLUG HOUSING ASS'Y

Documents

Product Drawings

[CONT,CRIMP SKT,18AWG,109,SZ 20](#)

English

CAD Files

Customer View Model

[ENG_CVM_1218267-1_C.3d_igs.zip](#)

English

Customer View Model

[ENG_CVM_1218267-1_C.3d_stp.zip](#)

English

Customer View Model

[ENG_CVM_1218267-1_C.2d_dxf.zip](#)

English

3D PDF

English

By downloading the CAD file I accept and agree to the [Terms and Conditions](#) of use.

Product Specifications

1218267-1

Gold (Au), Socket Contact, 18 AWG, .8 – .9 mm² Wire, Size 20, Crimp, Copper Alloy,
Signal, -55 – 125 °C [-67 – 257 °F]



Application Specification

English

Instruction Sheets

Instruction Sheet (U.S.)

English