

1-965641-3 ✓ ACTIVE

AMP | Timer Connector System

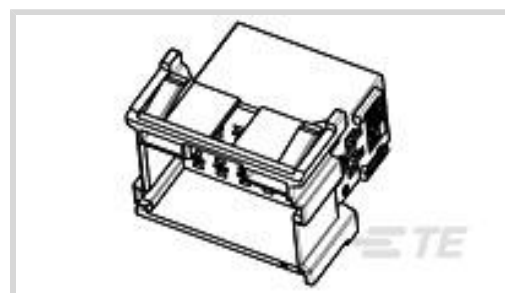
TE Internal #: 1-965641-3

12 V / 24 V, 6 Position, Automotive Housing for Male Terminals,
Wire-to-Board / Wire-to-Wire, 5 mm [.197 in] Centerline, Gray,
Timer Connector System

[View on TE.com >](#)



Automotive Parts > Automotive Connectors > Automotive Housings > Timer Connector Housing



Nominal Voltage Architecture: 12 V, 24 V

Connector & Housing Type: **Housing for Male Terminals**

Number of Positions: 6

Sealable: **No**

Operating Temperature Range: -40 – 120 °C [-40 – 248 °F]

[All Timer Connector Housing \(436\)](#)

Features

Product Type Features

Mixed & Hybrid Connector	No
Connector Shape	Rectangular
Connector & Housing Type	Housing for Male Terminals
Sealable	No
Primary Locking Feature	Integrated in Housing
Connector System	Wire-to-Board, Wire-to-Wire
Connector & Contact Terminates To	Wire & Cable

Configuration Features

Number of Positions	6
Number of Rows	2

Electrical Characteristics

Operating Voltage	28 VDC
Nominal Voltage Architecture	12 V, 24 V

Body Features

Cable Exit Angle	180 °
Primary Product Color	Gray
Connector & Keying Code	A



Contact Features

Contact Size	2.8mm
Contact Type	Tab
Mating Tab Width	2.8 mm [.11 in]

Mechanical Attachment

Strain Relief	Without
Terminal Position Assurance	No
Mating Alignment Type	Keyed
Mating Alignment	With
Connector Mounting Type	Cable Mount (Free-Hanging)

Housing Features

Housing Material	PA GF
Centerline (Pitch)	5 mm [.197 in]

Dimensions

Product Width	35.45 mm [1.396 in]
Product Length	17.5 mm [.689 in]
Connector Height	30.6 mm [1.205 in]

Usage Conditions

Operating Temperature Range	-40 – 120 °C [-40 – 248 °F]
Operating Temperature (Max)	120 °C [248 °F]

Operation/Application

Circuit Application	Power
---------------------	-------

Packaging Features

Packaging Method	Bag
------------------	-----

Other

Serviceable	No
Connector Position Assurance Capable	No

Product Compliance

[For compliance documentation, visit the product page on TE.com>](#)

EU RoHS Directive 2011/65/EU	Compliant
------------------------------	-----------



EU ELV Directive 2000/53/EC

Compliant

China RoHS 2 Directive MIIT Order No 32, 2016

有害物质含量符合标准要求 No Restricted Substance(s) Above Threshold

EU REACH Regulation (EC) No. 1907/2006

Current ECHA Candidate List: JUNE 2025 (250)
Candidate List Declared Against: JUNE 2025 (250)
Does not contain REACH SVHC

Halogen Content

Low Halogen - Br, Cl, F < 900 ppm per homogenous material. Also BFR/CFR/PVC Free

Solder Process Capability

Not applicable for solder process capability

Product Compliance Disclaimer

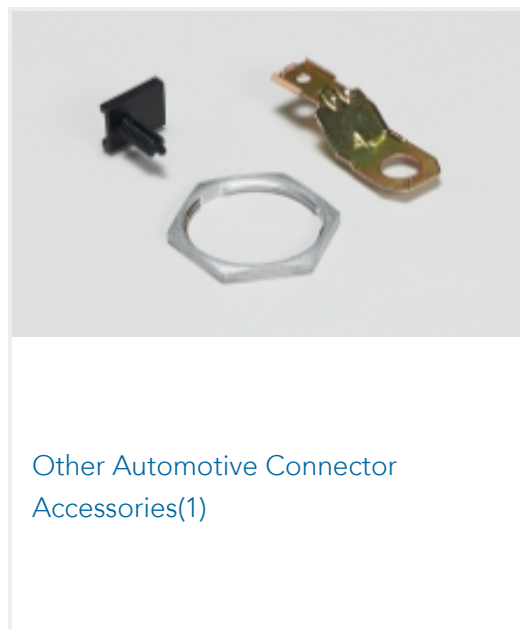
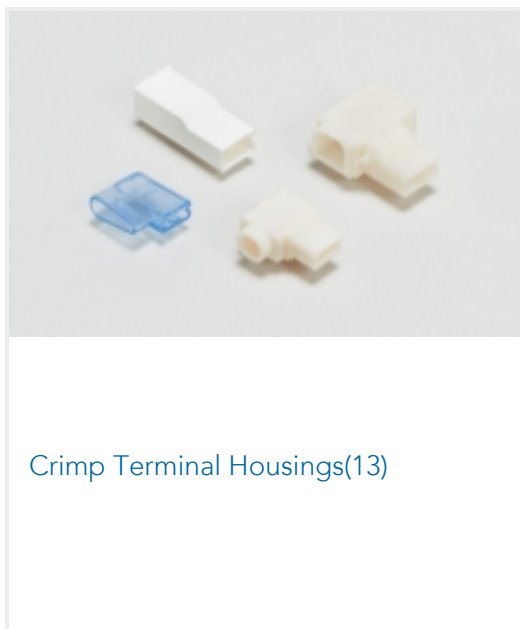
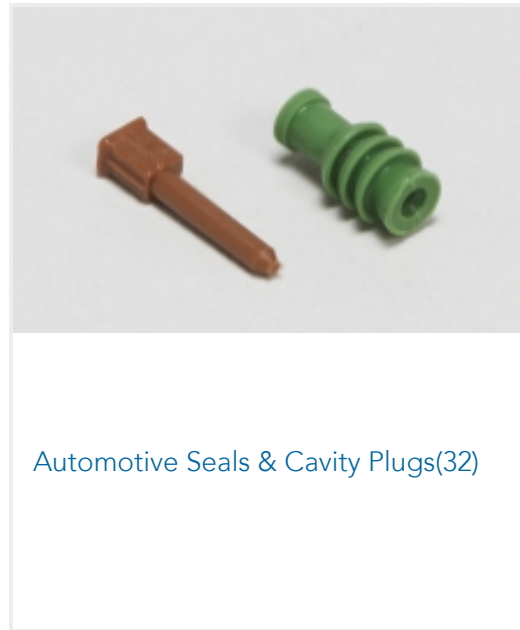
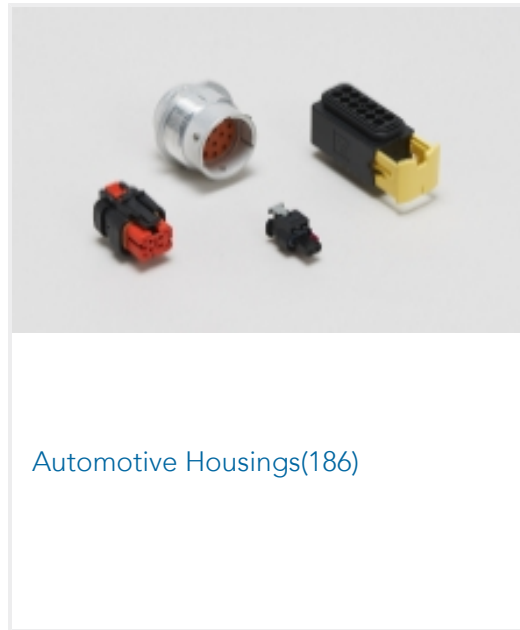
This information is provided based on reasonable inquiry of our suppliers and represents our current actual knowledge based on the information they provided. This information is subject to change. The part numbers that TE has identified as EU RoHS compliant have a maximum concentration of 0.1% by weight in homogenous materials for lead, hexavalent chromium, mercury, PBB, PBDE, DBP, BBP, DEHP, DIBP, and 0.01% for cadmium, or qualify for an exemption to these limits as defined in the Annexes of Directive 2011/65/EU (RoHS2). Finished electrical and electronic equipment products will be CE marked as required by Directive 2011/65/EU. Components may not be CE marked. Additionally, the part numbers that TE has identified as EU ELV compliant have a maximum concentration of 0.1% by weight in homogenous materials for lead, hexavalent chromium, and mercury, and 0.01% for cadmium, or qualify for an exemption to these limits as defined in the Annexes of Directive 2000/53/EC (ELV). Regarding the REACH Regulation, the information TE provides on SVHC in articles for this part number is based on the latest European Chemicals Agency (ECHA) 'Guidance on requirements for substances in articles' posted at this URL: <https://echa.europa.eu/guidance-documents/guidance-on-reach>

Compatible Parts





Also in the Series | **Timer Connector System**

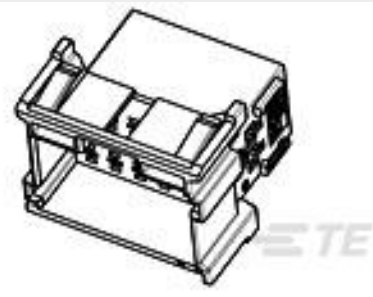


Customers Also Bought

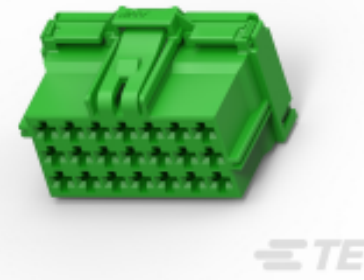




TE Part #926973-1
STD TIMER CONTACT



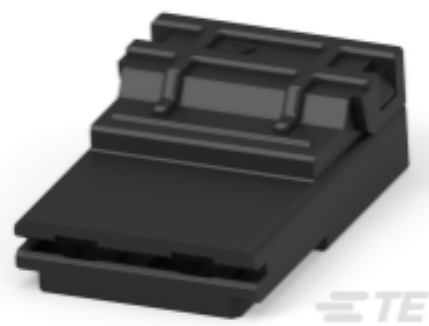
TE Part #1-967630-2
FLACHSTE-GEH2,8 21P



TE Part #CAT-AM705-CH8173
AMP Unsealed Connector Housing



TE Part #284259-1
BLANKING DEVICE ASS'Y X EMPTY



TE Part #1544458-1
BOITIER PC 8 MM 2

Documents

Product Drawings

TAB HOUSING 2,8 6P

English

CAD Files

3D PDF

3D

Customer View Model

[ENG_CVM_CVM_1-965641-3_D.2d_dxf.zip](#)

English

Customer View Model

[ENG_CVM_CVM_1-965641-3_D.3d_igs.zip](#)

English

Customer View Model

[ENG_CVM_CVM_1-965641-3_D.3d_stp.zip](#)

English

By downloading the CAD file I accept and agree to the [Terms and Conditions](#) of use.

Product Specifications

Application Specification

English