

1-968946-1 ✓ ACTIVE

AMP | Junior Power Timer, Timer Connector System

TE Internal #: 1-968946-1

Tab Terminal, 13 – 11 AWG, 2.5 – 4 mm² Wire, 2.8 mm [.11 in] Tab Width, Tin (Sn), .8 mm [.031 in] Tab Thickness, Unsealed, Timer Connector System

[View on TE.com >](#)



[Automotive Parts > Automotive Terminals >](#)

2.8 mm Automation Ready Terminals for Automotive Wire Harness Production and High Performance Automation



Terminal Type: **Tab**

Wire Size: **13 – 11 AWG**

Mating Tab Width: **2.8 mm [.11 in]**

Interface Plating: **Tin (Sn)**

[All 2.8 mm Automation Ready Terminals for Automotive Wire Harness Production and High Performance Automation \(136\)](#)

Features

Product Type Features

Receptacle Style	180°
Primary Locking Feature	Integrated in Housing
Sealable	No

Body Features

Terminal Seal Type	Unsealed
--------------------	----------

Contact Features

Typical Current Rating	30 A
Crimp Type	F-Crimp
Contact Size	2.8mm
Contact Fabrication	Stamped & Formed
Wire Contact Termination Area Plating Material	Tin
Terminal Type	Tab
Mating Tab Width	2.8 mm [.11 in]
Interface Plating	Tin (Sn)
Mating Tab Thickness	.8 mm [.031 in]

Termination Features



Termination Method to Wire & Cable	Crimp
------------------------------------	-------

Product Terminates To	Wire & Cable
-----------------------	--------------

Dimensions

Compatible Insulation Diameter Range	2.7 – 3.7 mm [.106 – .145 in]
--------------------------------------	-------------------------------

Wire Size	13 – 11 AWG
-----------	-------------

Wire Size Search	2.5 mm ² , 3 mm ² , 4 mm ²
------------------	---

Tab Length	28.5 mm [1.12 in]
------------	-------------------

Usage Conditions

Insulation Option	Uninsulated
-------------------	-------------

Operating Temperature (Max)	130 °C [266 °F]
-----------------------------	-----------------

Operating Temperature Range	-40 – 130 °C [-40 – 266 °F]
-----------------------------	-----------------------------

Operation/Application

Compatible With Wire Base Material	Copper
------------------------------------	--------

Conforms to Automation Guideline	Yes, KOMAX Guideline for automatic component insertion for electrical connections, Version 5.0 (March 2018)
----------------------------------	---

Industry Standards

Compatible With Agency/Standards Products	DIN 72036
---	-----------

Packaging Features

Packaging Method	Reel
------------------	------

Packaging Quantity	2700
--------------------	------

Other

Terminal Transmits	0 – 24 A (Low Power)
--------------------	----------------------

Product Compliance

[For compliance documentation, visit the product page on TE.com>](#)

EU RoHS Directive 2011/65/EU	Compliant
------------------------------	-----------

EU ELV Directive 2000/53/EC	Compliant
-----------------------------	-----------

China RoHS 2 Directive MIIT Order No 32, 2016	有害物质含量符合标准要求 No Restricted Substance(s) Above Threshold
---	---

EU REACH Regulation (EC) No. 1907/2006	Current ECHA Candidate List: JUNE 2025 (250) Candidate List Declared Against: JUNE 2025 (250)
--	--

Does not contain REACH SVHC

Halogen Content

Low Halogen - Br, Cl, F < 900 ppm per homogenous material. Also BFR/CFR/PVC Free

Solder Process Capability

Not applicable for solder process capability

Product Compliance Disclaimer

This information is provided based on reasonable inquiry of our suppliers and represents our current actual knowledge based on the information they provided. This information is subject to change. The part numbers that TE has identified as EU RoHS compliant have a maximum concentration of 0.1% by weight in homogenous materials for lead, hexavalent chromium, mercury, PBB, PBDE, DBP, BBP, DEHP, DIBP, and 0.01% for cadmium, or qualify for an exemption to these limits as defined in the Annexes of Directive 2011/65/EU (RoHS2). Finished electrical and electronic equipment products will be CE marked as required by Directive 2011/65/EU. Components may not be CE marked. Additionally, the part numbers that TE has identified as EU ELV compliant have a maximum concentration of 0.1% by weight in homogenous materials for lead, hexavalent chromium, and mercury, and 0.01% for cadmium, or qualify for an exemption to these limits as defined in the Annexes of Directive 2000/53/EC (ELV). Regarding the REACH Regulation, the information TE provides on SVHC in articles for this part number is based on the latest European Chemicals Agency (ECHA) 'Guidance on requirements for substances in articles' posted at this URL: <https://echa.europa.eu/guidance-documents/guidance-on-reach>

Compatible Parts



TE Part # 1-2236046-0
32W, MIXED, MALE CONN., CLIP2, COD A, CPA



TE Part # 2379922-4
21POS, AMP MCP 2.8, TAB HSG, UNSLD, COD D



TE Part # 2379922-2
21POS, AMP MCP 2.8, TAB HSG, UNSLD, COD B



TE Part # 2379922-1
21POS, AMP MCP 2.8, TAB HSG, UNSLD, COD A



TE Part # 2151634-2
OCEAN-2.0-APPLICATOR-S-120F160OV-RSA



TE Part # 2-968977-9
2,8MM FLA-STE-GEH3P



TE Part # CAT-M9194-CH8172
Multilock Connector Housing



TE Part # 1-2236046-1
32W, MIXED, MALE CONN., CLIP2, COD B, CPA



TE Part # 1801735-2
18W HYBRID UNSEALED RCPT HSG ASSY GREY



TE Part # 1-2298627-1
24POS, HYBRID, TAB HSG ASSY, UNSLD, COD A



TE Part # 2379922-3
21POS, AMP MCP 2.8, TAB HSG, UNSLD, COD C



TE Part # 2188394-6
025/060/110 HYB 30P CAP ASSY RED




KIT

REPRESENTATION ONLY

TE Part # 7-2266370-7
OC-120F160OV-752-CRIMPTOOLINGKIT



TE Part # 2298637-1
60POS, HYBRID, TAB HSG ASSY, UNSLD, COD A



TE Part # CAT-AM705-CH8173
AMP Unsealed Connector Housing



TE Part # 1801735-5
18W HYBRID UNSEALED RCPT HSG ASSY PURPLE



TE Part # 539723-2
DIE-MCP-2,8/1,5-4MM



TE Part # 1801735-3
18W HYBRID UNSEALED RCPT HSG ASSY BLUE

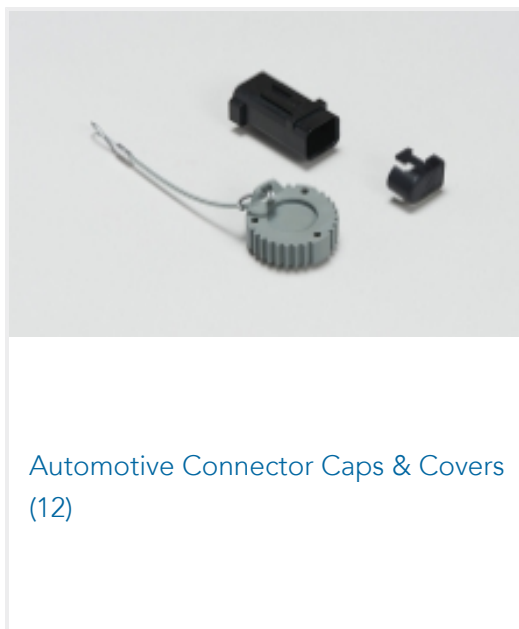


TE Part # 1801735-4
18W HYBRID UNSEALED RCPT HSG ASSY BROWN



TE Part # 2236046-8
32POS, MIXED, MALE CONN., CLIP2, COD B


Also in the Series | **Junior Power Timer**




Automotive Connector Caps & Covers (12)




Automotive Connector Locks & Position Assurance (15)




Automotive Housings (187)



Automotive Terminals (112)

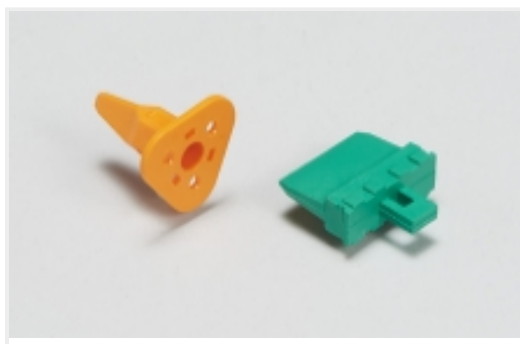


Other Automotive Connector Accessories (1)

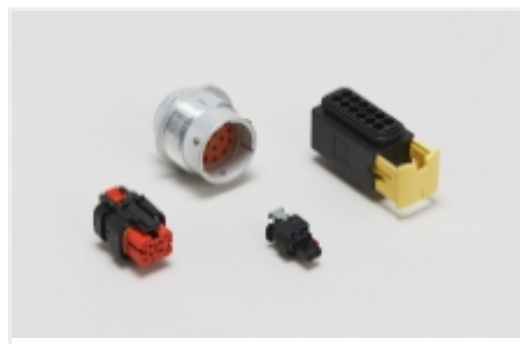


Special Purpose Terminals (2)

Also in the Series | **Timer Connector System**



Automotive Connector Locks & Position Assurance(15)



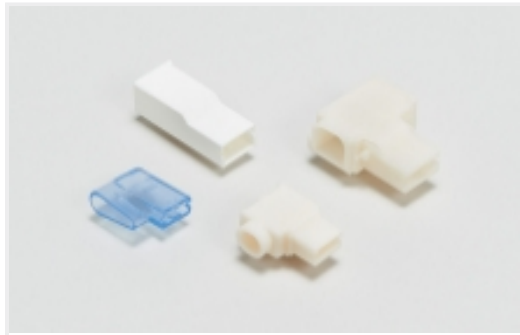
Automotive Housings(187)



Automotive Signal & Power Connector Housings(137)



Connector Seals & Cavity Plugs(33)

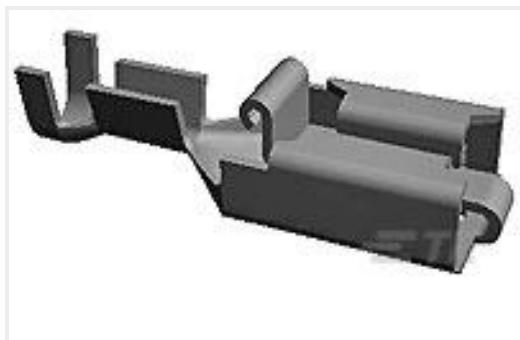


Crimp Terminal Housings(13)



Other Automotive Connector Accessories(1)

Customers Also Bought



TE Part #281827-2
PL 0.5-1.5 MM2 0.40 X 52.30 TPBR



TE Part #CAT-AM705-CH8173
AMP Unsealed Connector Housing



TE Part #CAT-N05-AT28
2.8 mm Automation Ready Terminals for Automotive Wire Harness Production and High Performance Automation



TE Part #1745068-1
3 POS. MCP 1,5 SRS. REC. CONNECTOR UNSLD.



TE Part #1-2364571-9
AVH19 FLT SS MT RNG BLU 24V26A



TE Part #1-1437713-4
106102=GROMMET WHITE

Documents

Product Drawings

[TAB 2.8x0.8 CONTACT CF SRC Sn](#)

English

[TAB 2.8x0.8 CONTACT CF SRC Sn](#)

English

CAD Files

[Customer View Model](#)

[ENG_CVM_CVM_1-968946-1_A.2d_dxf.zip](#)



English

[3D PDF](#)

3D

Customer View Model

[ENG_CVM_CVM_1-968946-1_A.3d_igs.zip](#)

English

Customer View Model

[ENG_CVM_CVM_1-968946-1_A.3d_stp.zip](#)

English

By downloading the CAD file I accept and agree to the [Terms and Conditions](#) of use.

Product Specifications

[Application Specification](#)

English

[Application Specification](#)

German

[Application Specification](#)

English

[Application Specification](#)

English