

1986377-1 ✓ ACTIVE



AMP | AMP Circular Plastic Connectors, Circular Plastic Connectors Series 1

TE Internal #: 1986377-1

7 Position Circular Power Connector, Connector Assembly, 250 VDC, Wire-to-Board / Wire-to-Panel, AMP Circular Plastic Connectors

[View on TE.com >](#)

Connectors > Power Connectors > Circular Power > Circular Power Connectors



Connector Product Type: Connector Assembly

Operating Voltage: 250 VDC

Connector System: Wire-to-Board, Wire-to-Panel

Number of Positions: 7

Sealable: No

Features

Product Type Features

Connector Product Type	Connector Assembly
Connector System	Wire-to-Board, Wire-to-Panel
Sealable	No
Connector & Contact Terminates To	Printed Circuit Board
Connector & Housing Type	Receptacle
Circular Connector Shell Type	All Plastic

Configuration Features

Reverse Numbering	Without
Number of Positions	7
Number of Power Positions	0
Number of Signal Positions	7

Electrical Characteristics

Operating Voltage	250 VAC
-------------------	---------

Contact Features



Reverse Gender	Yes
Contact Type	Socket
Contact Current Rating (Max)	13 A

Termination Features

Termination Method to PCB	Through Hole - Solder
---------------------------	-----------------------

Mechanical Attachment

Panel Mount Feature Type	Flange with Threaded Inserts
Mating Alignment Type	Keyed
Mating Retention Type	Threaded Coupling
Mating Alignment	With
Polarization Code	A
Connector Mounting Type	Panel Mount
Mating Retention	With
Panel Mount Feature	With

Housing Features

Housing Color	Black
Housing Material	PA 6.6
Circular Connector Shell Size	13

Dimensions

Assembly Length	32.51 mm[1.28 in]
-----------------	-------------------

Usage Conditions

Operating Temperature Range	-55 – 105 °C[-67 – 221 °F]
Fluid Resistance	None

Operation/Application

Circuit Application	Power & Signal
Shielded	No

Industry Standards

UL Flammability Rating	UL 94V-0
------------------------	----------

Packaging Features

Packaging Quantity	36
Packaging Method	Tray



Product Compliance

[For compliance documentation, visit the product page on TE.com>](#)

EU RoHS Directive 2011/65/EU	Compliant
EU ELV Directive 2000/53/EC	Compliant
China RoHS 2 Directive MIIT Order No 32, 2016	No Restricted Materials Above Threshold
EU REACH Regulation (EC) No. 1907/2006	Current ECHA Candidate List: JAN 2025 (247) Candidate List Declared Against: JAN 2025 (247) Does not contain REACH SVHC
Halogen Content	BFR/CFR/PVC Free, but Br/Cl >900 ppm in other sources.
Solder Process Capability	Wave solder capable to 265°C

Product Compliance Disclaimer

This information is provided based on reasonable inquiry of our suppliers and represents our current actual knowledge based on the information they provided. This information is subject to change. The part numbers that TE has identified as EU RoHS compliant have a maximum concentration of 0.1% by weight in homogenous materials for lead, hexavalent chromium, mercury, PBB, PBDE, DBP, BBP, DEHP, DIBP, and 0.01% for cadmium, or qualify for an exemption to these limits as defined in the Annexes of Directive 2011/65/EU (RoHS2). Finished electrical and electronic equipment products will be CE marked as required by Directive 2011/65/EU. Components may not be CE marked. Additionally, the part numbers that TE has identified as EU ELV compliant have a maximum concentration of 0.1% by weight in homogenous materials for lead, hexavalent chromium, and mercury, and 0.01% for cadmium, or qualify for an exemption to these limits as defined in the Annexes of Directive 2000/53/EC (ELV). Regarding the REACH Regulation, the information TE provides on SVHC in articles for this part number is based on the latest European Chemicals Agency (ECHA) 'Guidance on requirements for substances in articles' posted at this URL: <https://echa.europa.eu/guidance-documents/guidance-on-reach>

Also in the Series | AMP Circular Plastic Connectors



Circular Connector Backshells & Clamps(1)



Circular Power Connectors(211)



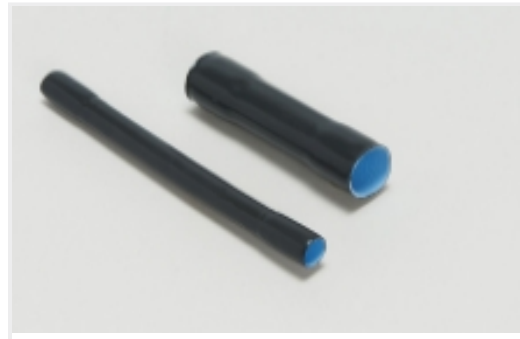
Connector Contacts(260)



Connector Hardware(10)



Power Contacts(260)



Sealing Sleeves(2)

Also in the Series | [Circular Plastic Connectors Series 1](#)



Circular Power Connectors(211)



Connector Contacts(260)



Power Contacts(260)

Customers Also Bought



TE Part #170361-1
UNIV M-N-L SOC. 26-22 AWG



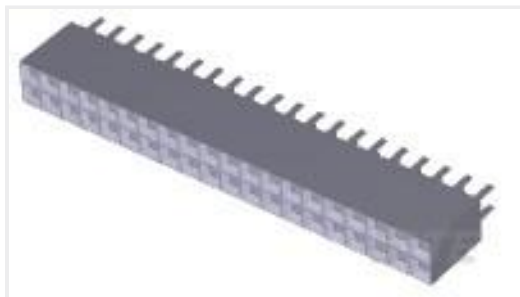
TE Part #170362-1
UNIV M-N-L SOC. 22-18 AWG



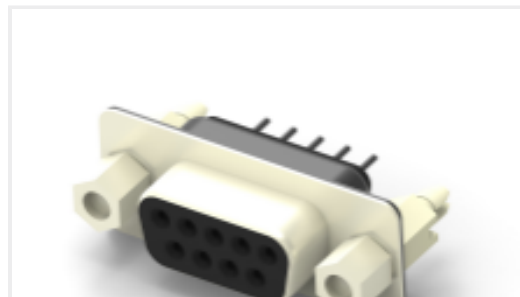
TE Part #172332-1
MINI UNIVERSAL MATE-N-LOK CAP HOUSING 9P



TE Part #211769-1
17-9 CPC RECEIPT REV SEX



TE Part #2-534206-0
40 MODII VRT DR CE 100/115



TE Part #2301838-2
AMPL REC HD20, VERT, 9P, B/L,4-40 S /LOCK

Documents

[CAD Files](#)

[3D PDF](#)

[3D](#)

[Customer View Model](#)

[ENG_CVM_CVM_1986377-1_C.2d_dxf.zip](#)

English



Customer View Model

[ENG_CVM_CVM_1986377-1_C.3d_igs.zip](#)

English

Customer View Model

[ENG_CVM_CVM_1986377-1_C.3d_stp.zip](#)

English

By downloading the CAD file I accept and agree to the [Terms and Conditions](#) of use.

Product Specifications

[Application Specification](#)

English

Instruction Sheets

[Instruction Sheet \(U.S.\)](#)

English

[Instruction Sheet \(U.S.\)](#)

English