

342106-1 ✓ ACTIVE

PLASTI-GRIP

TE Internal #: 342106-1

Closed Ring Tongue Terminal, 22 – 16 AWG, 5/16 / M8 Stud, 8.3 mm [.328 in] Stud Diameter, Closed Barrel, Straight, Tin Plating, PLASTI-GRIP

[View on TE.com >](#)



Terminals & Splices > Ring Terminals



Ring Terminal Product Type: Closed Ring Tongue Terminal

Wire Size: .3 – 1.3 mm²

Stud Size: 5/16, M8

Stud Diameter: 8.3 mm [.328 in]

Features

Product Type Features

Terminal Features	Sheared
Ring Terminal Product Type	Closed Ring Tongue Terminal
Stud Size	5/16, M8
Sealable	No
Wire Insulation Support Retention Type	Insulation Support

Configuration Features

Number of Holes	1
-----------------	---

Electrical Characteristics

Voltage Rating	600 V
----------------	-------

Body Features

Product Weight	.932 g
Insulation Sleeve Color	Red
Stripe Color	Red

Contact Features

--	--



Barrel Type	Closed
Terminal Orientation	Straight
Terminal Plating Material	Tin

Mechanical Attachment

Wire Insulation Support	Without
-------------------------	---------

Dimensions

Wire Size	.3 – 1.3 mm ²
Stud Diameter	8.3 mm [.328 in]
Tongue Thickness	.79 mm [.031 in]
Product Length	27.84 mm [1.096 in]
Compatible Insulation Diameter (Max)	3.6 mm [.141 in]
Compatible Insulation Diameter Range	2.7 – 3.6 mm [.106 – .142 in]

Usage Conditions

Insulation Option	Partially Insulated
Operating Temperature Range	0 – 105 °C [0 – 221 °F]

Operation/Application

Compatible With Wire Base Material	Copper
Compatible With Wire Plating Material	Tin

Industry Standards

Government Qualified Terminal	No
-------------------------------	----

Packaging Features

Packaging Quantity	100
Packaging Method	Loose Piece

Product Compliance

[For compliance documentation, visit the product page on TE.com>](#)

EU RoHS Directive 2011/65/EU	Compliant
EU ELV Directive 2000/53/EC	Compliant
China RoHS 2 Directive MIIT Order No 32, 2016	有害物质含量符合标准要求 No Restricted Substance(s) Above Threshold
EU REACH Regulation (EC) No. 1907/2006	Current ECHA Candidate List: JUNE 2025 (250)

Candidate List Declared Against: JUNE 2025 (250)
Does not contain REACH SVHC

Halogen Content

Not Low Halogen - contains Br or Cl > 900 ppm.

Solder Process Capability

Not applicable for solder process capability

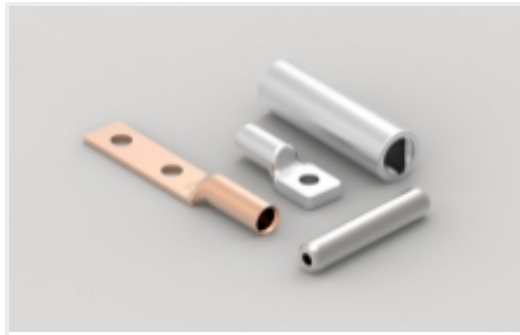
Product Compliance Disclaimer

This information is provided based on reasonable inquiry of our suppliers and represents our current actual knowledge based on the information they provided. This information is subject to change. The part numbers that TE has identified as EU RoHS compliant have a maximum concentration of 0.1% by weight in homogenous materials for lead, hexavalent chromium, mercury, PBB, PBDE, DBP, BBP, DEHP, DIBP, and 0.01% for cadmium, or qualify for an exemption to these limits as defined in the Annexes of Directive 2011/65/EU (RoHS2). Finished electrical and electronic equipment products will be CE marked as required by Directive 2011/65/EU. Components may not be CE marked. Additionally, the part numbers that TE has identified as EU ELV compliant have a maximum concentration of 0.1% by weight in homogenous materials for lead, hexavalent chromium, and mercury, and 0.01% for cadmium, or qualify for an exemption to these limits as defined in the Annexes of Directive 2000/53/EC (ELV). Regarding the REACH Regulation, the information TE provides on SVHC in articles for this part number is based on the latest European Chemicals Agency (ECHA) 'Guidance on requirements for substances in articles' posted at this URL: <https://echa.europa.eu/guidance-documents/guidance-on-reach>

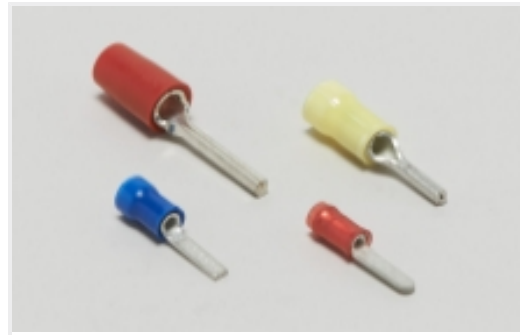
Compatible Parts



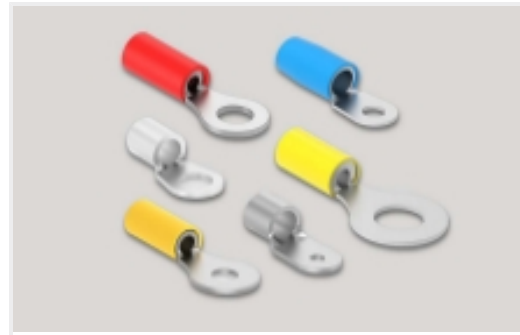
Also in the Series | PLASTI-GRIP



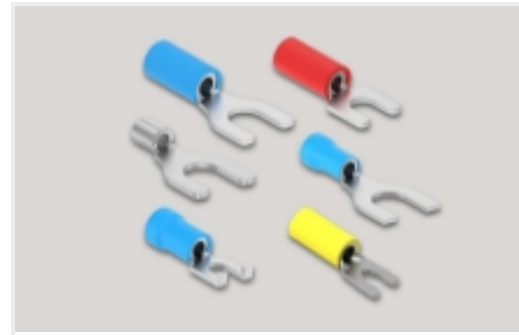
Compression Connectors(3)



Crimp Wire Pins, Tabs & Ferrules(20)



Ring Terminals(310)

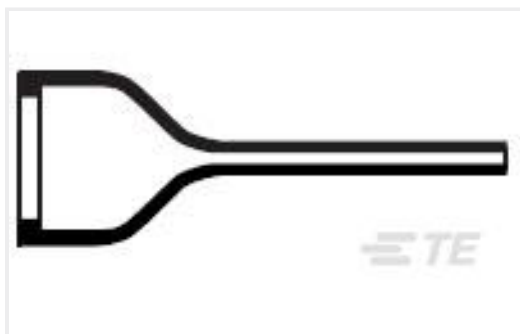


Spade Terminals(158)



Splices(45)

Customers Also Bought



TE Part #362579-000
202D953-25/86-0



TE Part #802643-SF
FN2070L-36-08



TE Part #DTM06-08SC
PLG, 8P, GRN, N, C



TE Part #T4132012031-000
M12,FRONT MOUNT,MALE,A,3P,
SOLDER WIRE



TE Part #20026680-54
6511N-NX BLE Abs 350Bar NPT w
/battery



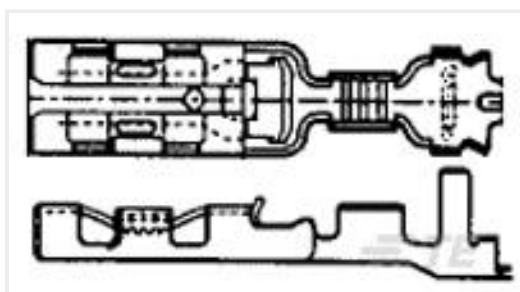
TE Part #DT04-12PA-BL11
REC, 12P, GRY, E, ENH KEY, CAP,
FLANGE,A



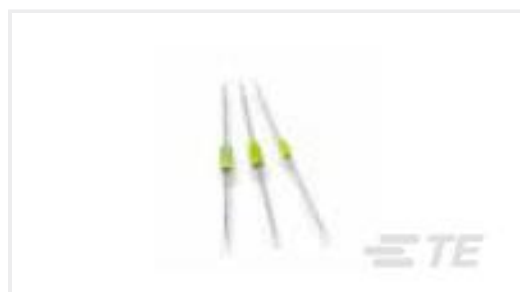
TE Part #TAA755A5501-002
M12A5-MS-FS-PUR-1.0M



TE Part #60998-1
SPADE 16-14 AWG .0305 X .955 TPCU



TE Part #353249-2
110 PL EX REC. 26-22AWG PTPHBZ



TE Part #1623937-3
SC10-10-0525-10 10UH AMMO 1000



Documents

Product Drawings

[22-16 F.E.P.G. RING TONGUE 5/1](#)

English

CAD Files

[3D PDF](#)

3D

Customer View Model

[ENG_CVM_CVM_342106-1_M.2d_dxf.zip](#)

English

Customer View Model

[ENG_CVM_CVM_342106-1_M.3d_igs.zip](#)

English

Customer View Model

[ENG_CVM_CVM_342106-1_M.3d_stp.zip](#)

English

By downloading the CAD file I accept and agree to the [Terms and Conditions](#) of use.

Datasheets & Catalog Pages

[PLASTI GRIP_ORG](#)

English

Product Specifications

[Application Specification](#)

English