

53412-1 ✓ ACTIVE



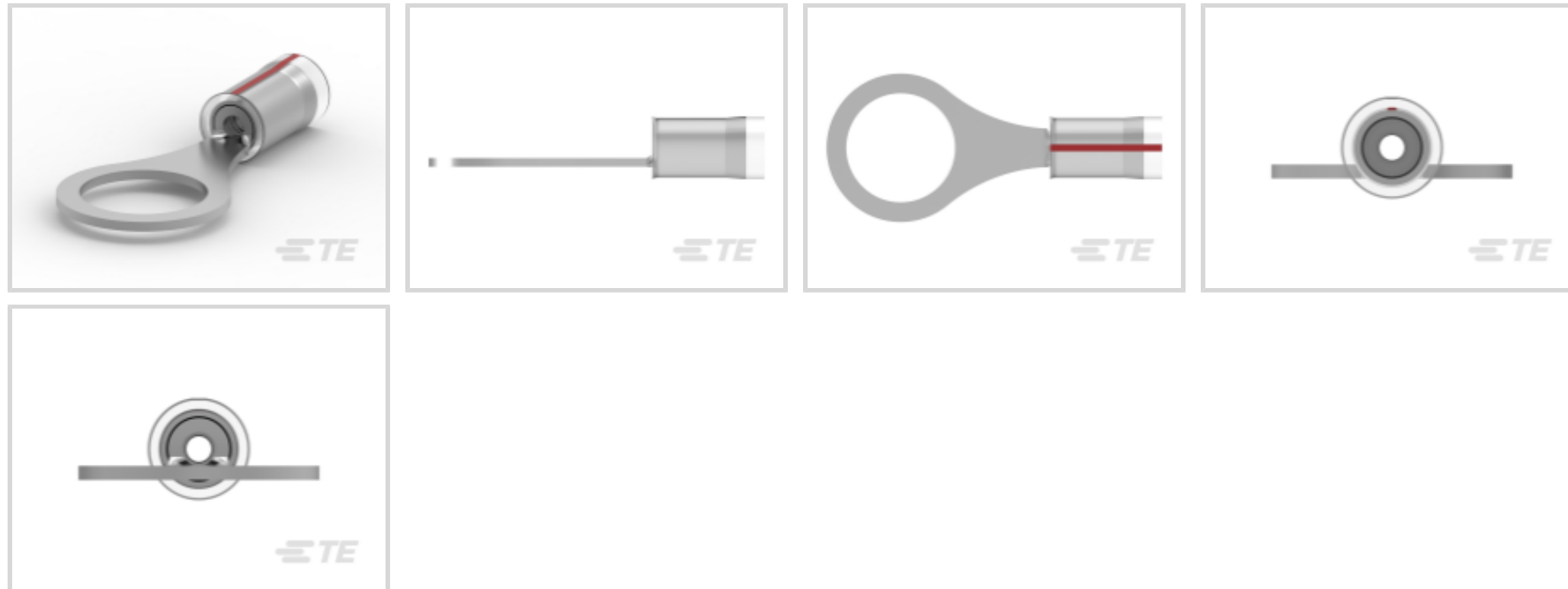
PIDG

TE Internal #: 53412-1

Closed Ring Tongue Terminal, 22 AWG, 3/8 Stud, 9.91 mm Stud Diameter, Closed Barrel, Straight, Tin-Lead Plating, Partially Insulated, PIDG

[View on TE.com >](#)

Terminals & Splices > Ring Terminals > PIDG Radiation Resistant C Rings/Spades



Ring Terminal Product Type: Closed Ring Tongue Terminal

Wire Size: 509 – 3260 CMA

Stud Size: 3/8

[All PIDG Radiation Resistant C Rings/Spades \(36\)](#)

Features

Product Type Features

Ring Terminal Product Type	Closed Ring Tongue Terminal
Stud Size	3/8
Sealable	No
Wire Insulation Support Retention Type	Insulation Support

Configuration Features

Number of Holes	1
-----------------	---

Body Features

Insulation Sleeve Color	Natural
Stripe Color	Red

Contact Features

Military Part Class	Class I
Barrel Type	Closed
Terminal Orientation	Straight
Terminal Plating Material	Tin-Lead



Mechanical Attachment

Wire Insulation Support	With
-------------------------	------

Dimensions

Wire Size	509 – 3260 CMA
Stud Diameter	9.91 mm
Tongue Thickness	.79 mm[.031 in]
Product Length	30.94 mm[1.218 in]
Compatible Insulation Diameter (Max)	3.18 mm[.125 in]
Compatible Insulation Diameter Range	2.03 – 3.18 mm[.08 – .125 in]

Usage Conditions

Insulation Option	Partially Insulated
Operating Temperature Range	0 – 150 °C[0 – 302 °F]

Operation/Application

Compatible With Wire Base Material	Copper
Compatible With Wire Plating Material	Tin

Industry Standards

Government Qualified Terminal	Yes
-------------------------------	-----

Packaging Features

Packaging Quantity	1000
Packaging Method	Loose Piece

Product Compliance

[For compliance documentation, visit the product page on TE.com>](#)

EU RoHS Directive 2011/65/EU	Not Compliant
EU ELV Directive 2000/53/EC	Compliant with Exemptions
China RoHS 2 Directive MIIT Order No 32, 2016	有害物质含量超出标准 Restricted Substance(s) Above Threshold
EU REACH Regulation (EC) No. 1907/2006	Current ECHA Candidate List: JUNE 2025 (250) Candidate List Declared Against: JUNE 2025 (250) SVHC > Threshold: Pb (13% in 4690948374)

Article Safe Usage Statements:

Do not eat, drink or smoke when using this product. Wash thoroughly after handling. Recycle if possible and dispose of the article by following all applicable governmental regulations relevant to your geographic location.



Halogen Content	Not Low Halogen - contains Br or Cl > 900 ppm.
Solder Process Capability	Not applicable for solder process capability

Product Compliance Disclaimer

This information is provided based on reasonable inquiry of our suppliers and represents our current actual knowledge based on the information they provided. This information is subject to change. The part numbers that TE has identified as EU RoHS compliant have a maximum concentration of 0.1% by weight in homogenous materials for lead, hexavalent chromium, mercury, PBB, PBDE, DBP, BBP, DEHP, DIBP, and 0.01% for cadmium, or qualify for an exemption to these limits as defined in the Annexes of Directive 2011/65/EU (RoHS2). Finished electrical and electronic equipment products will be CE marked as required by Directive 2011/65/EU. Components may not be CE marked. Additionally, the part numbers that TE has identified as EU ELV compliant have a maximum concentration of 0.1% by weight in homogenous materials for lead, hexavalent chromium, and mercury, and 0.01% for cadmium, or qualify for an exemption to these limits as defined in the Annexes of Directive 2000/53/EC (ELV). Regarding the REACH Regulation, the information TE provides on SVHC in articles for this part number is based on the latest European Chemicals Agency (ECHA) 'Guidance on requirements for substances in articles' posted at this URL: <https://echa.europa.eu/guidance-documents/guidance-on-reach>

Compatible Parts

 TE Part # 2392021-1 RED BATTERY DAHT KIT 110V (47689-4)	 TE Part # 2063030-1 SDE DIESET, RBY, UL	 TE Part # 539691-2 ERGO DIE R.B.Y	 TE Part # 169404 CERTI-LOK DIE
 TE Part # 59250 T-HEAD PIDG 26-14 ASSY	 TE Part # 169400 CERTI-LOK FRAME W/O DIES	 TE Part # 2392021-2 RED BATTERY DAHT KIT 220V (47689-4)	 TE Part # 47806-2 DIES PIDG 22-16 DIE SET
 TE Part # 132246-3 TERMINAL RING TONGUE PIDG 22 18	 TE Part # 47386-4 DAHT PG PIDG 26-16 ASSY REPRESENTATION ONLY	 TE Part # 47386 DAHT PG PIDG 26-16 ASSY REPRESENTATION ONLY	 TE Part # 58433-3 PRO CR ASSY, RBY IS9252



TE Part # 59170
T-HEAD PIDG SH 26-14 ASSY



TE Part # 58423-1
DIE, RBY IS9252



TE Part # 59300
T-HEAD PIDG PG 26-16 ASSY



TE Part # 59824-1
TETRA-CRIMP PIDG PG FASTON 22-10 ASSY



TE Part # 525690
DAHT PG PIDG 20-18 ASSY

Also in the Series | PIDG



Compression Connectors(50)



Crimp Wire Pins, Tabs & Ferrules(39)



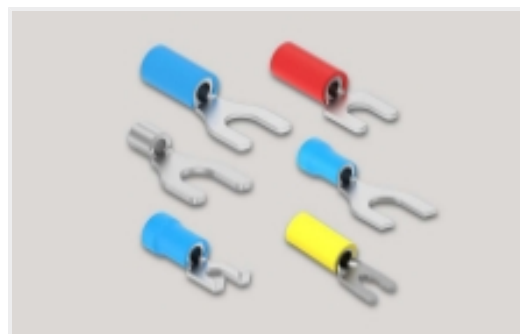
Knife Disconnects(11)



Quick Disconnects(38)



Ring Terminals(587)



Spade Terminals(228)

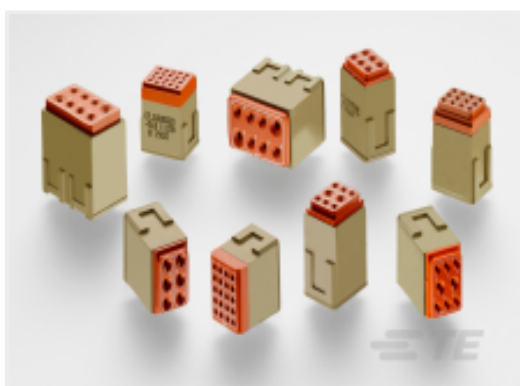


Special Purpose Terminals(1)



Splices(41)

Customers Also Bought



TE Part # YCTJ112E01EC015000
MODULE ASSY



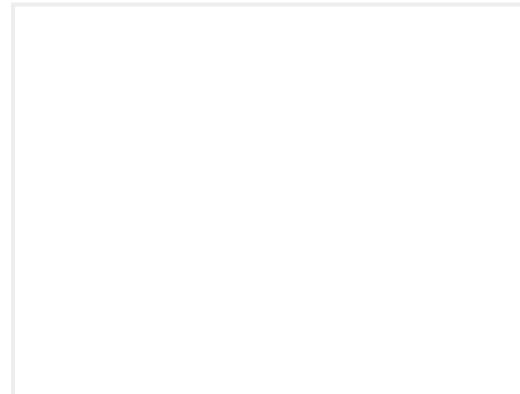
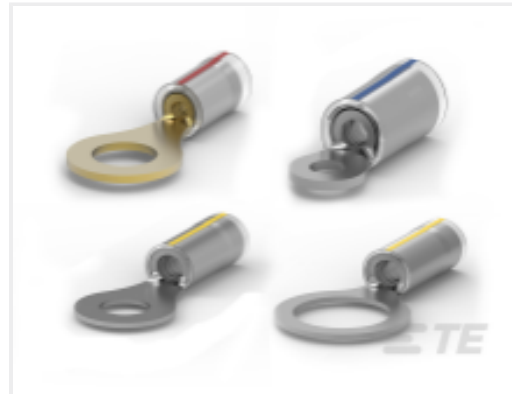
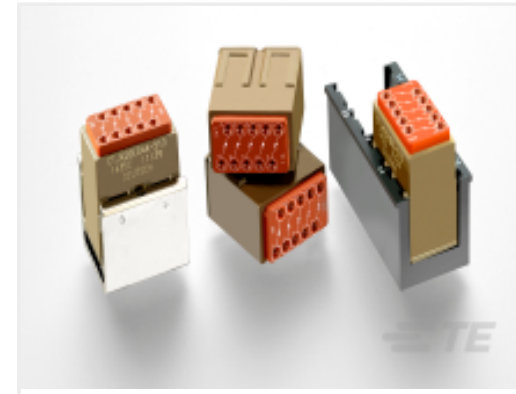
TE Part # 0638514002
HCTE-0312-0-SP



TE Part # YD369-HR66-NS10000
369 HARSH 6 WAY REC, CRIMP, SKT



TE Part # 0662-207-0082
CONT SOC ASSY

TE Part #17P-090
MODULETE Part #YCTJ120E01BC015000
ELEC MODULETE Part #CAT-P592-R472
PIDG Radiation Resistant C Rings
/SpadesTE Part #CTJ420E044-513
ELEC MODULE

Documents

Product Drawings

[PIDG PVF2 22-16COM22-18MIL 3/8](#)

English

CAD Files

[3D PDF](#)

3D

Customer View Model

[ENG_CVM_CVM_53412-1_F.2d_dxf.zip](#)

English

Customer View Model

[ENG_CVM_CVM_53412-1_F.3d_igs.zip](#)

English

Customer View Model

[ENG_CVM_CVM_53412-1_F.3d_stp.zip](#)

English

By downloading the CAD file I accept and agree to the [Terms and Conditions](#) of use.

Product Specifications

[Application Specification](#)

English