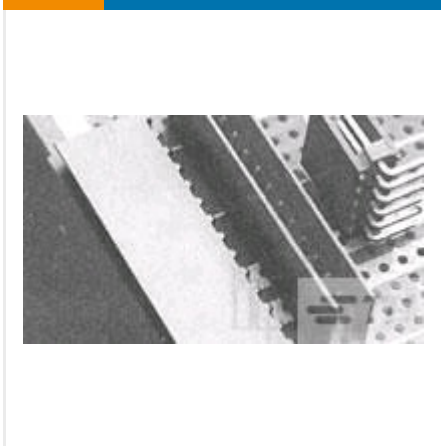




CONNECTORS

MULTIPLE CONFIGURATION PCB HEADERS & RECEPTACLES



✓ Active

TE CONNECTIVITY (TE)

HEADER HE13 RA 4 P

AMPMODU | AMPMODU

281699-4

TE Internal Number: 281699-4

EU RoHS Compliant

EU ELV Compliant

Number of Positions 4

Centerline (Pitch) 2.54 mm [.1 in]

Connector & Contact Terminates To Printed Circuit Board

Connector Style Plug

Header Type Shrouded

[↓ PRODUCT DRAWING](#)
English

[↓ 3D PDF](#)

DOCUMENTATION

Product Drawings

HEADERS HE13, SINGLE ROW, RIGHT ANGLE

PDF

English

CAD Files

Customer View Model

3D_IGS.ZIP

English

Customer View Model

3D_STP.ZIP

English

Customer View Model

2D_DXF.ZIP

English

3D PDF

PDF

English

Customer View Model

2D_DXF.ZIP

English

3D PDF

PDF

3D

Customer View Model

3D_IGS.ZIP

English

Customer View Model

3D_STP.ZIP

English

Product Specifications

Product Specification

MODULAR HEADERS AND PLUGS ACCORDING TO IEC 60603-8 SERIES (HE13 HE14 SERIES)

PDF

French

Product Environmental Compliance

TE Material Declaration

MD_281699-4_110620151111_dmtec

PDF

English

FEATURES



Please review product documents or [contact us](#) for the latest agency approval information.

Please Note: Use the Product Drawing for all design activity.

Product Type Features

Connector & Contact Terminates To Printed Circuit Board

Connector Style Plug

Header Type Shrouded

PCB Mounting Orientation Right Angle

Connector Type Header

Row-to-Row Spacing 2.54 mm [.1 in]

Gasket Without

Product Type Connector

Stabilizers Without

Board Standoff Without

Strain Relief Without

Configuration Features

Selectively Loaded No
Number of Positions 4
Number of Rows 1
Keyed No

Body Features

Post Size .64 mm [.025 in]

Contact Features

Solder Tail Contact Plating Material Tin over Nickel
Contact Protection With
Contact Shape Square
Contact Current Rating (Max) (A) 3
Contact Base Material Phosphor Bronze
Contact Mating Area Plating Thickness (µin) 15
Contact Type Pin
Contact Mating Area Plating Material Gold
Contact Protection Type Shrouded

Termination Features

Termination Method to PC Board Through Hole
Termination Method to Wire/Cable Crimp, Insulation Displacement Crimp (IDC)
Termination End Plating Material Tin-Lead
Termination Post Length (mm) 2.9

Mechanical Attachment

Panel Mount Feature Without
Mating Connector Lock Without
PCB Mounting Style Through Hole
Mating Alignment Type Polarization
PCB Mount Retention Without
Mating Alignment Without

Housing Features

Centerline (Pitch) 2.54 mm [.1 in]
Housing Style 2-Sided
Housing Material High Temperature Thermoplastic
Housing Color Blue

Dimensions

Shrouded End Dimension (mm) 1.27
Mating Post Length (mm) 6.75

Usage Conditions

Operating Temperature Range (°C) -55 – 105

Industry Standards

Approved Standards CSA LR7189, UL E28476

UL Flammability Rating UL 94V-0

Packaging Features

Packaging Quantity 100

Packaging Method Package

PRODUCT COMPLIANCE



Statement of Compliance

Statement of Compliance

PDF
