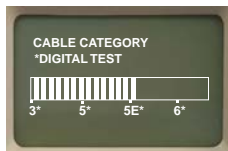


**BOTH PRINTING
AND NON-PRINTING
MODELS AVAILABLE**

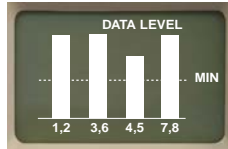
REAL WORLD™ CERTIFIER 2



**Cable Category
CAT 3,5,5E,6**



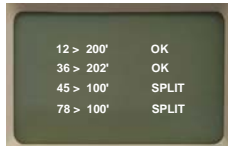
**Speed testing
10MB, 100MB,
1000MB**



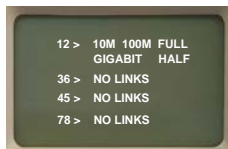
**Data levels of
real live data
(from any device)**



**Length (real TDR)
Propagation delay
and skew**

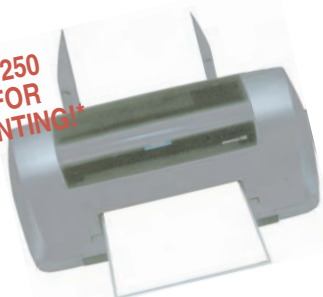


**Splits, opens,
shorts,
wire map.**



**Network device
testing
including inline**

**STORES 250
TESTS FOR
LATER PRINTING!**



Reading: 'Cable # 1'
Length 297 Ft. Delay 452 ns Skew 21 ns Patch/Solid Patch
CERT LEVEL 1: 1 GIG, 19% TOLERANCE
CERT LEVEL 2: 1 GIG, 19% TOLERANCE
DELAY OK SKEW OK
NEXT/FEXT PASSED (DIGITAL TEST)
SPLIT OK MAP OK

WIREMAP:
12> 300' == <12
36> 304' == <36
45> 311' == <45
78> 297' == <78

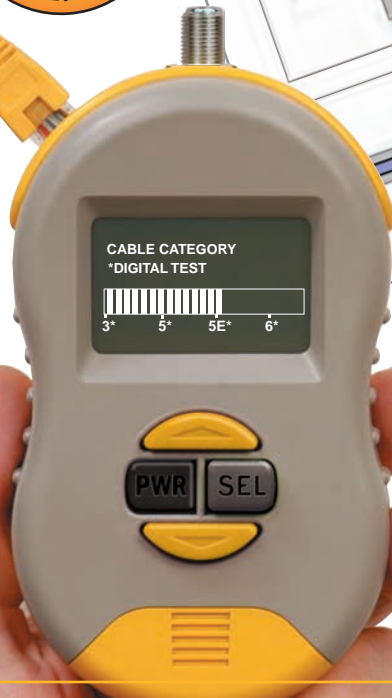
PROPROPAGATION DELAY (PER PAIR)
12> 457 NS DELAY
36> 463 NS DELAY
45> 474 NS DELAY
78> 452 NS DELAY

ByteBrothers™
Network Test and Certification
Model: RWC1000K
www.bytebrothers.com

PASSED

4 NS SKEW
11 NS SKEW
21 NS SKEW
0 NS SKEW

TESTS AND DISPLAYS
★ CAT 3,5,5E,6 ★
★ CABLE CATEGORY ★



Made in the USA

© 2010 Byte Brothers, Inc.
Separate toner probe included



**RWC1000K - PRINTING
RWC1000NP - NON PRINTING**

ByteBrothers™

Cable and Device Testers

**Test Equipment
Depot**
1-800-517-8431

99 Washington Street
Melrose, MA 02176
Phone 781-665-1400
Toll Free 1-800-517-8431

Visit us at www.TestEquipmentDepot.com

Requires a PC with Microsoft's®Excel®