

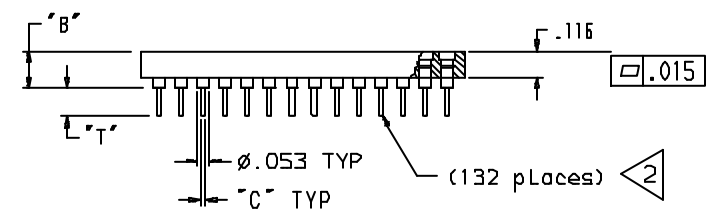
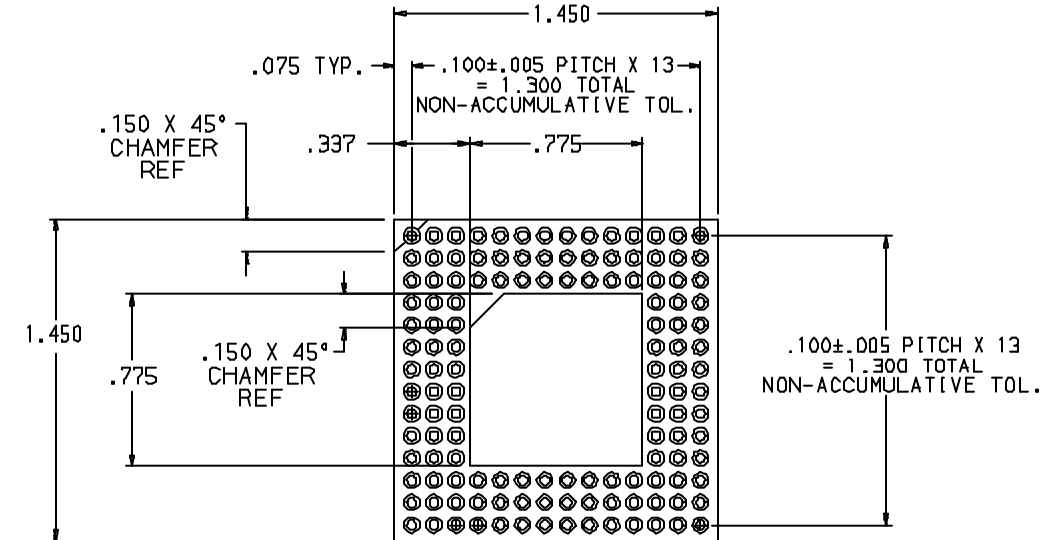
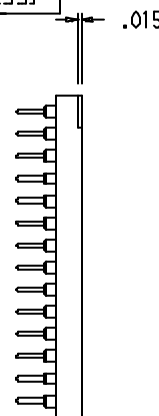
Tous droits strictement réservés. Reproduction ou communication à des tiers interdite sous quelque forme que ce soit sans autorisation écrite du propriétaire. Property of FCI. Drets de reproduction FCI.

TABLE 1: TIN LEAD VERSION

FCI PART NUMBER PGA132HXXXYY-1414R	CLIP/SHELL PLATING	"T" TAIL LENGTH	"B" BODY LENGTH	"C" DIA.	INSERTION FORCE	EXTRACTION FORCE	NO. OF FINGERS	REF. CLIP NO.
PGA132H187B5-1414R	30 u" GOLD/200 u" TIN	.108	.122	.030 DIA.	35 G ULTRA LOW	20 G	6	6 (35)
PGA132H012B1-1414R	10 u" GOLD/200 u" TIN	.125	.165	.020 DIA.	65 G VERY LOW	28 G	6	6 (32)
PGA132H003B1-1414R	30 u" GOLD/200 u" TIN	.125	.165	.020 DIA.	65 G VERY LOW	28 G	6	6 (32)
PGA132H004B1-1414R	30 u" GOLD/10 u" GOLD	.125	.165	.020 DIA.	65 G VERY LOW	28 G	6	6 (32)
PGA132H008B5-1414R	10 u" GOLD/200 u" TIN	.125	.165	.020 DIA.	35 G ULTRA LOW	20 G	6	6 (35)
PGA132H009B5-1414R	30 u" GOLD/200 u" TIN	.125	.165	.020 DIA.	35 G ULTRA LOW	20 G	6	6 (35)
PGA132H010B5-1414R	30 u" GOLD/10 u" GOLD	.125	.165	.020 DIA.	35 G ULTRA LOW	20 G	6	6 (35)
PGA132H026B5-1414R	30 u" GOLD/200 u" TIN	.150	.165	.020 DIA.	35 G ULTRA LOW	20 G	6	6 (35)

TABLE 2: LEAD FREE VERSION

FCI PART NUMBER P132HXXXYY-1414RLF	CLIP/SHELL PLATING	"T" TAIL LENGTH	"B" BODY LENGTH	"C" DIA.	INSERTION FORCE	EXTRACTION FORCE	NO. OF FINGERS	REF. CLIP NO.
P132H187B5-1414RLF	30 u" GOLD/200 u" TIN	.108	.122	.030 DIA.	35 G ULTRA LOW	20 G	6	6 (35)
P132H012B1-1414RLF	10 u" GOLD/200 u" TIN	.125	.165	.020 DIA.	65 G VERY LOW	28 G	6	6 (32)
P132H003B1-1414RLF	30 u" GOLD/200 u" TIN	.125	.165	.020 DIA.	65 G VERY LOW	28 G	6	6 (32)
P132H004B1-1414RLF	30 u" GOLD/10 u" GOLD	.125	.165	.020 DIA.	65 G VERY LOW	28 G	6	6 (32)
P132H008B5-1414RLF	10 u" GOLD/200 u" TIN	.125	.165	.020 DIA.	35 G ULTRA LOW	20 G	6	6 (35)
P132H009B5-1414RLF	30 u" GOLD/200 u" TIN	.125	.165	.020 DIA.	35 G ULTRA LOW	20 G	6	6 (35)
P132H010B5-1414RLF	30 u" GOLD/10 u" GOLD	.125	.165	.020 DIA.	35 G ULTRA LOW	20 G	6	6 (35)
P132H026B5-1414RLF	30 u" GOLD/200 u" TIN	.150	.165	.020 DIA.	35 G ULTRA LOW	20 G	6	6 (35)



NOTE RoHS INFORMATION

- The "LF" products meet European Union Directives and other country regulations as described in 65-22-008.
- The housing will withstand exposure to 260°C peak temperature for 20 seconds in a wave solder application with a 1.6mm minimum thick circuit board. See application notes/procedures if they are available.
- Packaging spec: see 65-14-920

TIN LEAD PART NUMBER (SEE TABLE1)
PGA132HXXXYY-1414R

LEAD FREE PART NUMBER (SEE TABLE2)
P132HXXXYY-1414RLF

NOTES:

1. PLASTIC INSULATOR MATERIAL: POLYPHENYLENE SULFIDE (PPS), HIGH TEMPERATURE, THERMOPLASTIC, FLAMMABILITY RATED UL-94V0.
2. CONTACT MATERIAL:
OUTER SHELL: BRASS ALLOY 360, 1/2 HARD PER QQ-B-626.
INNER CONTACT: BERYLLIUM COPPER, ALLOY 172 PER QQ-C-533.
3. ALL POSITIONS LOADED WITH CONTACTS.

Ltr	ecn no	dr	date
A	V94429	DLW	12/10/99
B	LS05-0078	LGO	02/09/05
C	LS06-0004	LGO	17/01/06
-	-	-	-
-	-	-	-
-	-	-	-
-	-	-	-

	www.fciconnect.com		ISO 1302	tolerance ISO 406 ISO 1101	projection 	INCH
	Dr	D. WOLFORD	12/10/99	Product family	PGA	Scale
Eng	A. VASBINDER	12/10/99	Spec ref	-	A3	37.5:
Chr	A. VASBINDER	12/10/99	Material	SEE NOTES	ECN	LS06-0004
Appr	A. VASBINDER	12/10/99				
title			132 POSITIONS PGA (14 X 14) SOCKET		Rev.	
catalog no			-		C	
dwg no				58301-1		sheet 1 of 2
CUSTOMER COPY						

Tous droits strictement réservés. Reproduction ou communication a des tiers interdite sans que la forme que ce soit sans autorisation écrite du Propriétaire de c FCI. Drets de reproduction FCI.

TABLE 1: TIN LEAD VERSION

FCI PART NUMBER PGA132HXXXYY-1367R	CLIP/SHELL PLATING	"T" TAIL LENGTH	"B" BODY LENGTH	"C" DIA.	INSERTION FORCE	EXTRACTION FORCE	NO. OF FINGERS	REF. CLIP NO.
PGA132H187B5-1367R	30 u" GOLD/200 u" TIN	.108	.122	.030 DIA.	35 G ULTRA LOW	20 G	6	6 (35)
PGA132H012B1-1367R	10 u" GOLD/200 u" TIN	.125	.165	.020 DIA.	65 G VERY LOW	28 G	6	6 (32)
PGA132H003B1-1367R	30 u" GOLD/200 u" TIN	.125	.165	.020 DIA.	65 G VERY LOW	28 G	6	6 (32)
PGA132H004B1-1367R	30 u" GOLD/10 u" GOLD	.125	.165	.020 DIA.	65 G VERY LOW	28 G	6	6 (32)
PGA132H008B5-1367R	10 u" GOLD/200 u" TIN	.125	.165	.020 DIA.	35 G ULTRA LOW	20 G	6	6 (35)
PGA132H009B5-1367R	30 u" GOLD/200 u" TIN	.125	.165	.020 DIA.	35 G ULTRA LOW	20 G	6	6 (35)
PGA132H010B5-1367R	30 u" GOLD/10 u" GOLD	.125	.165	.020 DIA.	35 G ULTRA LOW	20 G	6	6 (35)
PGA132H026B5-1367R	30 u" GOLD/200 u" TIN	.150	.165	.020 DIA.	35 G ULTRA LOW	20 G	6	6 (35)

TABLE 2: LEAD FREE VERSION

FCI PART NUMBER P132HXXXYY-1367RLF	CLIP/SHELL PLATING	"T" TAIL LENGTH	"B" BODY LENGTH	"C" DIA.	INSERTION FORCE	EXTRACTION FORCE	NO. OF FINGERS	REF. CLIP NO.
P132H187B5-1367RLF	30 u" GOLD/200 u" TIN	.108	.122	.030 DIA.	35 G ULTRA LOW	20 G	6	6 (35)
P132H012B1-1367RLF	10 u" GOLD/200 u" TIN	.125	.165	.020 DIA.	65 G VERY LOW	28 G	6	6 (32)
P132H003B1-1367RLF	30 u" GOLD/200 u" TIN	.125	.165	.020 DIA.	65 G VERY LOW	28 G	6	6 (32)
P132H004B1-1367RLF	30 u" GOLD/10 u" GOLD	.125	.165	.020 DIA.	65 G VERY LOW	28 G	6	6 (32)
P132H008B5-1367RLF	10 u" GOLD/200 u" TIN	.125	.165	.020 DIA.	35 G ULTRA LOW	20 G	6	6 (35)
P132H009B5-1367RLF	30 u" GOLD/200 u" TIN	.125	.165	.020 DIA.	35 G ULTRA LOW	20 G	6	6 (35)
P132H010B5-1367RLF	30 u" GOLD/10 u" GOLD	.125	.165	.020 DIA.	35 G ULTRA LOW	20 G	6	6 (35)
P132H026B5-1367RLF	30 u" GOLD/200 u" TIN	.150	.165	.020 DIA.	35 G ULTRA LOW	20 G	6	6 (35)

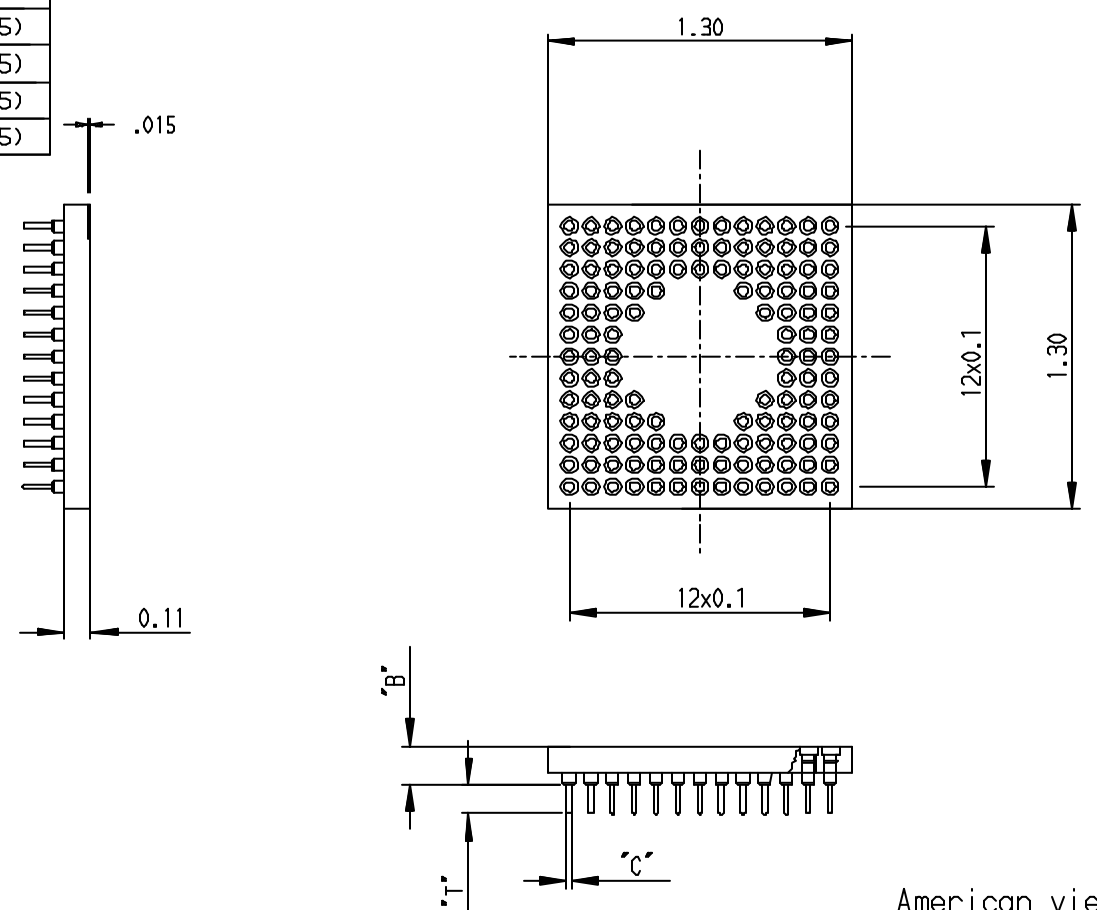
FCI

NOTE RoHS INFORMATION

- The "LF" products meet european union Directives and other country regulations as described in G5-22-008.
- The housing will withstand exposure to 260°C peak temperature for 20 seconds in a wave solder application with a 1.6mm minimum thick circuit board. See application notes/procedures if they are available.
- Packaging spec: see G5-14-920

TIN LEAD PART NUMBER (SEE TABLE1)
PGA132HXXXYY-1367R

LEAD FREE PART NUMBER (SEE TABLE2)
P132HXXXYY-1367RLF



NOTES:

- 1- HOUSING BENDING MAX 0.1 MM FOR A LENGTH OF 25.4 MM.
- 2- TOLERANCE OF POSITION OF PINS EXTRIMITIES ±0.1 MM (NOT CUMULATIVE).

FCI www.fciconnect.com		ISO 1302	tolerance ISO 406 ISO 1101	projection 	INCH ↔
Dr	L. GOISNARD	02/09/05	Product family	PGA	Scale
Eng	LEGALLIC	02/09/05	Spec ref	-	37.5:
Chr	LEGARE	02/09/05	Material	SEE NOTES	ECN
Appr	LEGARE	02/09/05			LS06-0004
title			132 POSITIONS PGA (13 X 13) SOCKET		Rev. C
catalog no			- CUSTOMER COPY		sheet 2 of 2

All rights strictly reserved. Reproduction or issue to third parties in any form whatever is not permitted without written authority from the proprietor. Property of FCI. Copyright FCI.