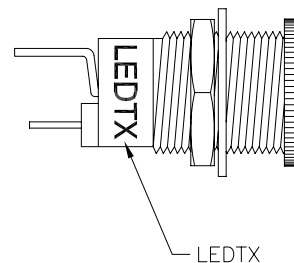
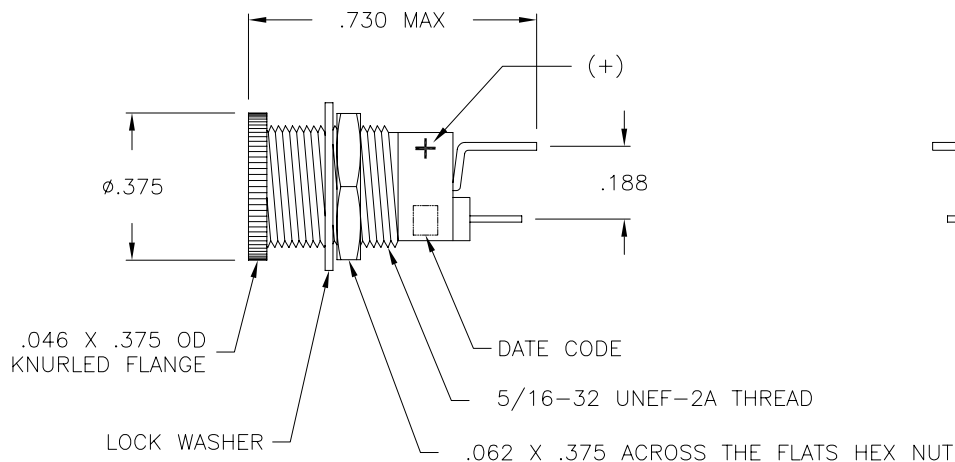
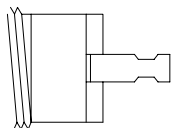


LTR	REVISION	DATE	APPD
C	030408-RV02: ADDED MARKING	08-14-08	GP



NOTES:

1. MATERIAL: CASE - BRASS, NICKEL PLATED
MOUNTING HARDWARE - BRASS, NICKEL PLATED
TERMINALS - BRASS, GOLD PLATED
2. FINISH: HLC2010 - BRIGHT NICKEL
*HLC2020 - BLACK NICKEL *
3. PARTS WITH (*) ARE RoHS CERTIFIED.



REVISION NOTIFICATION	
<input type="checkbox"/>	PMA
<input type="checkbox"/>	UL
<input type="checkbox"/>	CUSTOMER _____
<input type="checkbox"/>	OTHER

LED[®]
LEDTRONICS,™ INC.
23105 KASHIWA COURT
TORRANCE, CA 90505

-PROPRIETARY-
This document contains Proprietary information of LEDTRONICS,™ INC. It may not be copied, used or disclosed for any purpose without the prior express written consent of LEDTRONICS,™ INC.

.XXX ± .010 TOLERANCE PER ANSI-Y14.5
.XX ± .025 (UNLESS OTHERWISE STATED)
ANGLES ± 0°,30'
FRACT. ± 1/32

TITLE HLDR HLC2010, HLDR HLC2020 (STANDARD)						
DWG NO CMHD0030		SCALE 2:1		SHEET 1 OF 1		DATE 10-07-96
CODE IDENT NO. 8Z410	DWG BY MRM	CHK BY PL 08-19-08	QA CH 08-15-08	MNFG	CUSTOMER GENERIC	