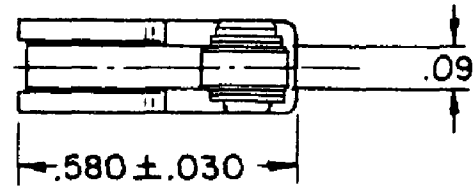
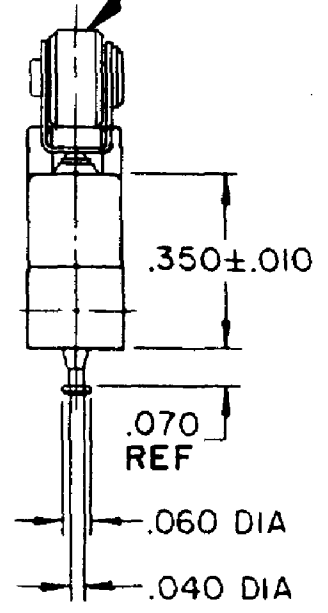
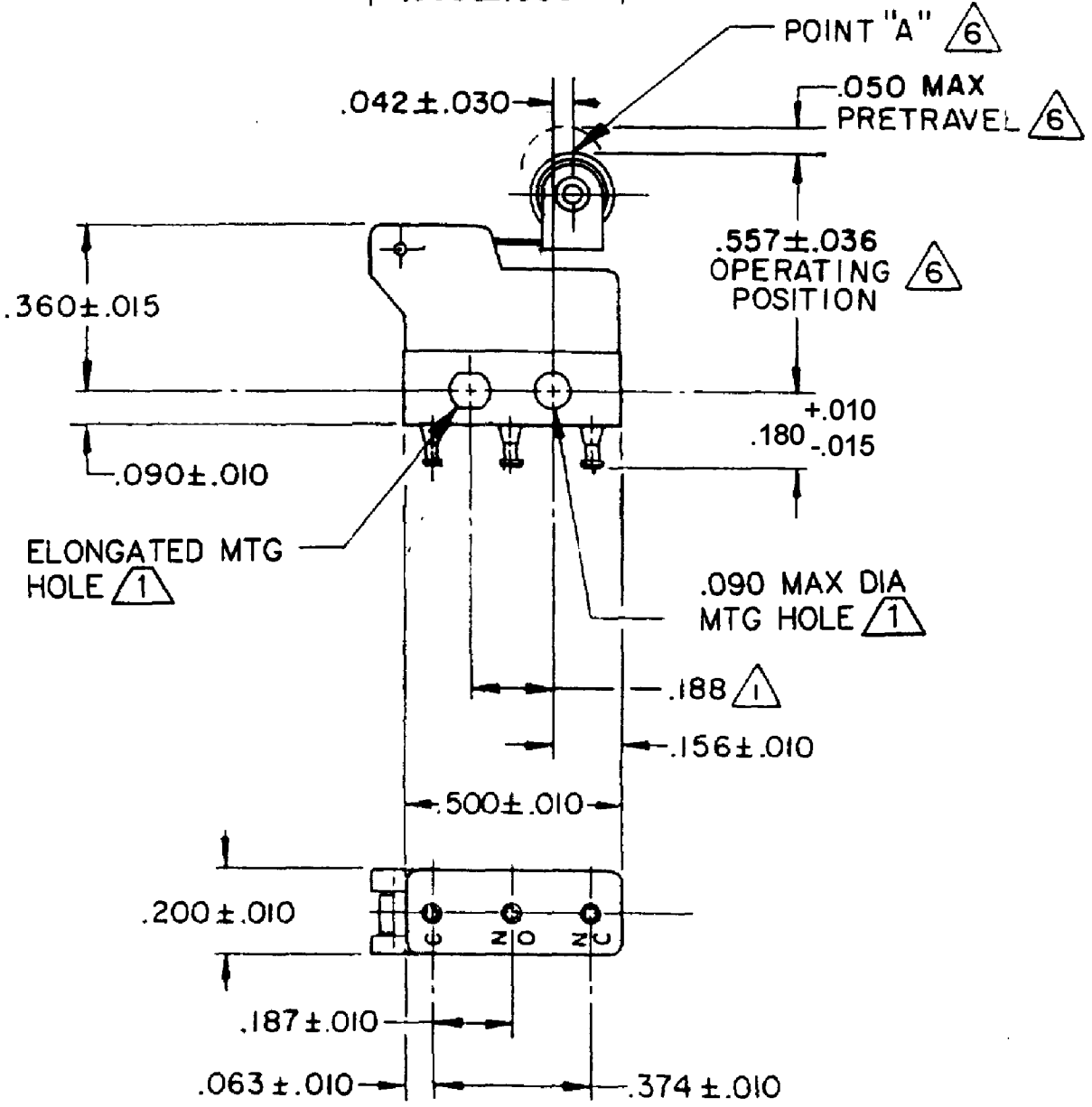


HONEYWELL PART NUMBER
313SX30-T
PRODUCT CODE VDT0273

REV	DOCUMENT	CHANGED BY	CHECK
8	0060324	VKR 13JAN10	CMH



.19 DIA X .09 WIDE
CORROSION RESISTANT
SST ROLLER (.005 FIM)



NOTES

- $\triangle 1$ MOUNTING HOLES WILL ACCEPT PINS OR SCREWS OF .087 MAX DIA ON .188 ± .002 CENTERS
- 2 - TERMINALS ARE SOLDER DIPPED WITH RoHS-COMPLIANT TIN/COPPER/SILVER SOLDER.
- 3 - SWITCH WILL WITHSTAND TEMPERATURE OF 250°F
- 4 - MOVABLE CONTACT MATERIAL - 24K GOLD OVERLAY
- 5 - STATIONARY CONTACT MATERIAL - GOLD ALLOY
- $\triangle 6$ CHARACTERISTICS ARE TAKEN AT POINT "A"

RELEASE NO.	PR-16995-T
REPLACES	X89561-SX

CHARACTERISTICS $\triangle 6$
OPERATING FORCE ----- 68 GRAMS MAX
RELEASE FORCE ----- 11 GRAMS MIN
DIFFERENTIAL TRAVEL ---- .015 MAX
OVERTRAVEL ----- .010 MIN

ELECTRICAL DATA		
CONTACT ARRANGEMENT SPDT		
30 VOLTS DC RATING		
	SEA LEVEL	50,000 FT
INDUCTIVE	0.5 AMP	0.5 AMP
RESISTIVE	1 AMP	1 AMP
MAXIMUM INRUSH 2 AMP		
APPROVALS	KEMA, CE	1A 250 V - T125 25E3
	UL, CSA	1A 125 VAC BRAND L22J

DESIGN UNITS: INCH
TOLERANCES UNLESS NOTED:
NO PLACE X ±
ONE PLACE .X ±
TWO PLACE .XX ±
THREE PLACE .XXX ±
FOUR PLACE .XXXX ±
ANGLES ±
THIRD ANGLE PROJECTION

DRAWN	SPK	27FEB08
CHECK	RJ	27FEB08
THIS DRAWING COVERS A PROPRIETARY ITEM AND IS THE PROPERTY OF HONEYWELL. THIS DRAWING IS NOT TO BE COPIED OR USED WITHOUT THE PERMISSION OF HONEYWELL.		
INTERPRET PER ANSI Y14.5M-1982 OTHER HONEYWELL ENGINEERING STANDARDS MAY APPLY		
RASTER		

Honeywell			
TITLE SWITCH - BASIC			
SIZE	TYPE	DRAWING NAME	REV
B	I	313SX30-T	8
SCALE	-	WEIGHT: .003 LB MAX	SHEET 1 OF 1