

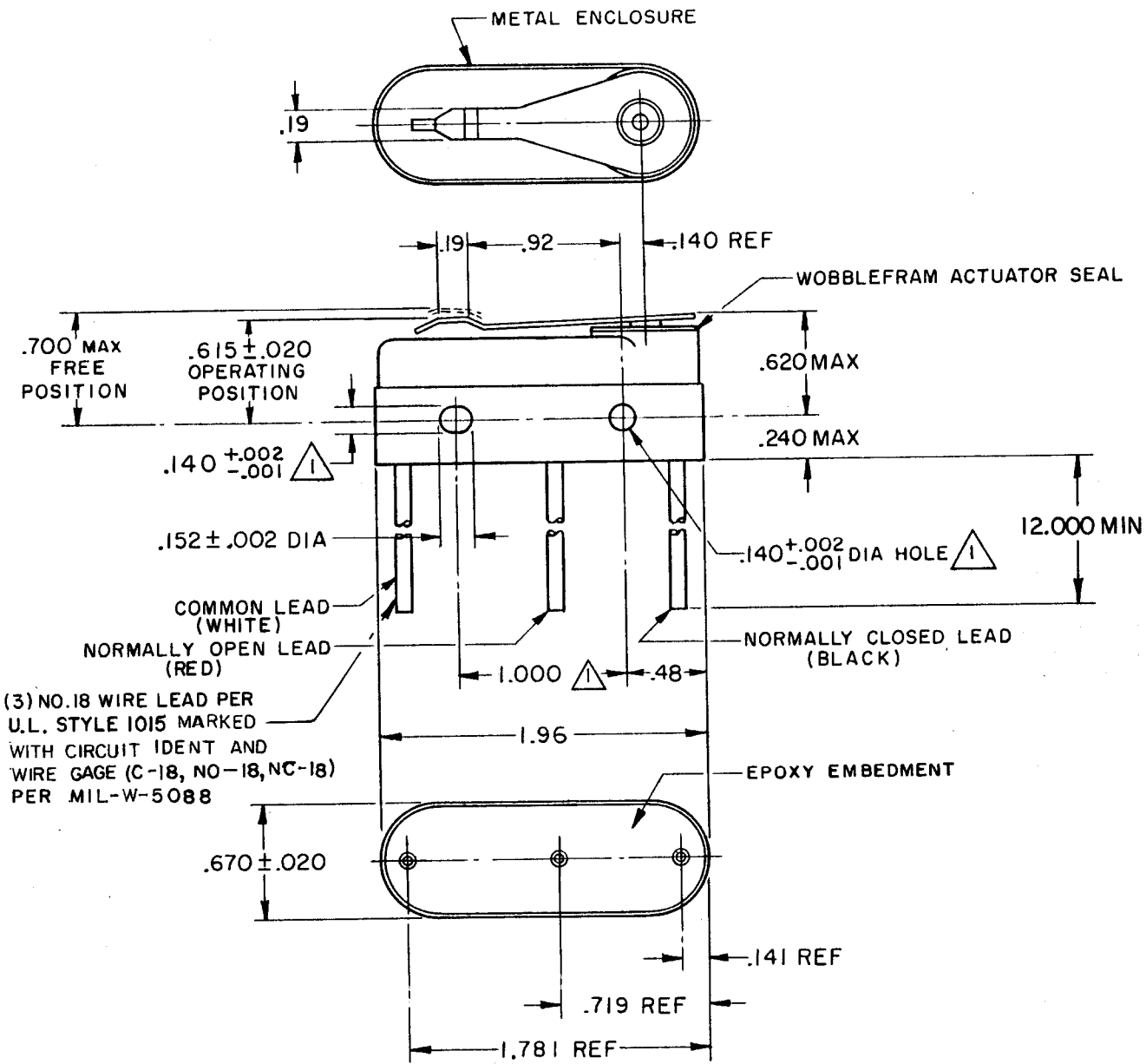
MICRO SWITCH

FREEPORT ILLINOIS, U.S.A
A DIVISION OF HONEYWELL
FED. MFG. CODE 91929

SWITCH - BASIC

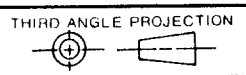
CATALOG LISTING
8HS4-118 S

M 8HS4-118
 DRAWING NUMBER
 ISSUE 7
 REVISIONS
 A 53027 TRF 30 MAR 83
 B C055162B KEW 16 OCT 84
 C C061043 BGS 16 SEP 88
 D C071281 DAW 22 OCT 91
 E C075625 JDB 14 JULY 93
 F C077846 DLT 8 SEP 94
 KAG 29 JUL 82 CHECK CEB 30 JULY 82
 FO-52848-A DRAWN



- NOTE -**
- 1 MOUNTING HOLES WILL ACCEPT PINS OR SCREWS OF .139 MAX DIA ON 1.000 ± .002 CENTERS
 - 2 - FOR USE IN AMBIENT TEMPERATURE RANGE FROM -65° TO +180° F
 - 3 WEIGHT OF SWITCH ONLY IS 1.5 OZ MAX WEIGHT OF CONDUCTOR GROUP ONLY IS 0.5 OZ MAX PER FOOT

THIS DRAWING COVERS A PROPRIETARY ITEM AND IS THE PROPERTY OF MICRO SWITCH, A DIVISION OF HONEYWELL. THIS DRAWING IS NOT TO BE COPIED OR USED WITHOUT THE APPROVAL OF MICRO SWITCH.



CHARACTERISTICS	
OPERATING FORCE	6 - 10 OZ
RELEASE FORCE	2.5 OZ MIN
PRETRAVEL	.065 MAX
DIFFERENTIAL TRAVEL	.020 MAX
OVERTRAVEL	.010 MIN.

ELECTRICAL DATA	
CONTACT ARRANGEMENT S P D T	
L277 1A 125 VAC, 5A 28 VDC	

SCALE FULL			
DO NOT SCALE PRINT			
TOLERANCES			
APPLY TO DESIGN UNITS. CONVERSIONS ARE ONLY FOR REFERENCE. UNLESS NOTED, TOLERANCES ARE ±			
DIM.	TOL.	DIM.	TOL.
mm	mm/in	in	mm/in
NO PLACES	X	1/04	X X
ONE PLACE	X,X	0.4/.016	X XX
TWO PLACES	X,XX	0.15/.006	X XXX
THREE PLACES	X,XXX		X,XXX
ANGLES			
DESIGN UNITS		US CUSTOMARY	
SI METRIC <input type="checkbox"/>		US CUSTOMARY <input checked="" type="checkbox"/>	
WEIGHT <input checked="" type="checkbox"/>			