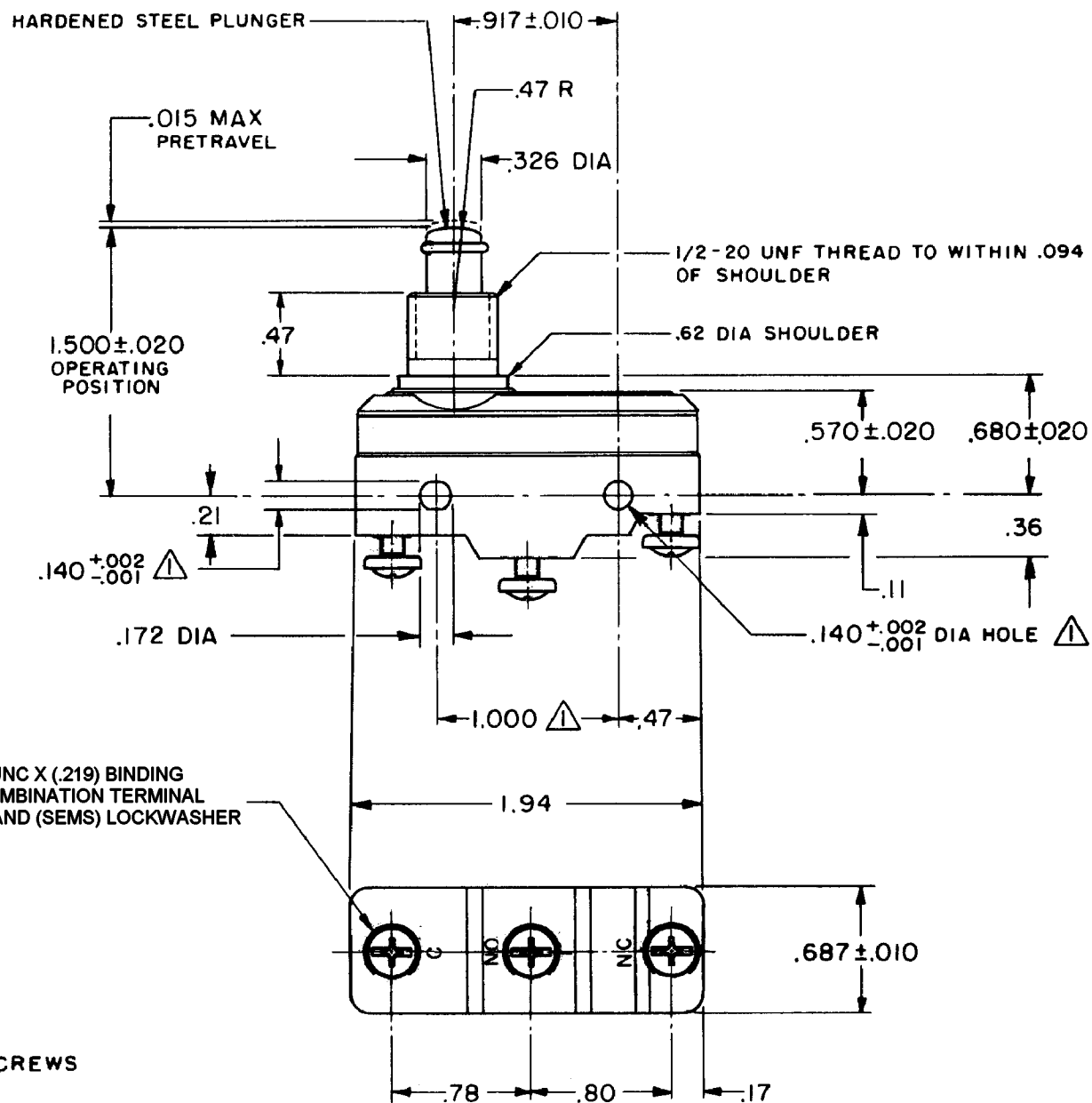


HONEYWELL
PART NUMBER

BZ-2RQ25272T

REV	DOCUMENT	CHANGED BY	CHECK
A	0033918	JA 17SEP07	PSR



NOTE
 ▲ - MOUNTING HOLES WILL ACCEPT PINS OR SCREWS OF $.139 \text{ MAX DIA}$ ON $1.000 \pm .002$ CENTERS
 2 - CONTACT MATERIAL: GOLD PLATE / CLAD

PRODUCT CODE: ALM6201 REPLACES: X200835-BZ

CHARACTERISTICS	ELECTRICAL DATA	DESIGN UNITS: INCH	DRAWN	JA	17SEP07	Honeywell		
		TOLERANCES UNLESS NOTED:	CHECK	PSR	17SEP07			
OPERATING FORCE ----- 9-13 OZ	CONTACT ARRANGEMENT S P D T	NO PLACE X ± 0.040	THIS DRAWING COVERS A PROPRIETARY ITEM AND IS THE PROPERTY OF HONEYWELL. THIS DRAWING IS NOT TO BE COPIED OR USED WITHOUT THE PERMISSION OF HONEYWELL.			TITLE SWITCH-BASIC		
RELEASE FORCE ----- 4 OZ MIN	15A - 125, 250 OR 480 VAC, 2A - 600 VAC 1/8HP - 125 VAC; 1/4HP - 250 VAC CODE L74 1/2A - 125 VDC; 1/4A - 250 VDC	ONE PLACE .X ± 0.030						
DIFFERENTIAL TRAVEL - .0004 - .0020	-L288- -L306- -L315- 16A 250V ~ T85 5E4	TWO PLACE .XX ± 0.015				INTERPRET PER ASME Y14.5M-1994 OTHER HONEYWELL ENGINEERING STANDARDS MAY APPLY		
OVERTRAVEL ----- .219 MIN		THREE PLACE .XXX ± 0.005						
		FOUR PLACE .XXXX ± 0.0005	RASTER					
		ANGLES ± 2				THIRD ANGLE PROJECTION		