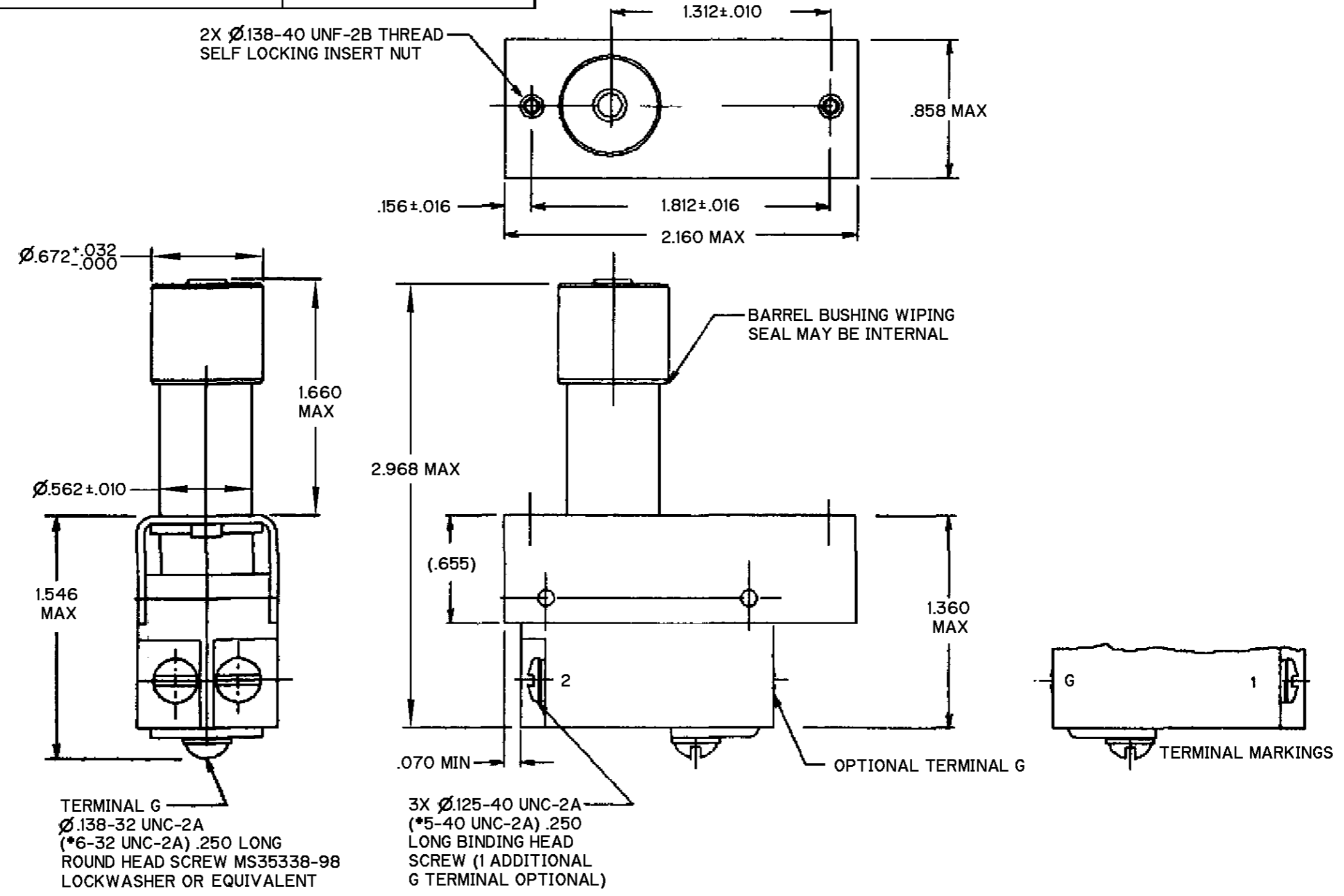


CATALOG LISTING
JS-552
PAGE 1 OF 1
RELEASE NO. PR-24110
REPLACES
ISSUE 3
REVISIONS
A 201207
CSL 14 SEP 00
B ECO 0002767
RS 05 JAN 04
CHECK
SAV 6 OCT 99
CHECK
SAV 6 OCT 99
DRAWN
JJA 6 OCT 99
RASTER



THIS DRAWING COVERS A PROPRIETARY ITEM AND IS THE PROPERTY OF MICRO SWITCH, A DIVISION OF HONEYWELL. THIS DRAWING IS NOT TO BE COPIED OR USED WITHOUT THE APPROVAL OF MICRO SWITCH

CHARACTERISTICS	ELECTRICAL DATA	
ACTUATING FORCE ----- 7 - 11 LBS	CONTACT ARRANGEMENT D P S T - N O	
FULL OVERTRAVEL FORCE----- 20 LBS MAX	28 VDC	
RELEASE FORCE----- .5 LB MIN	RATED LOAD	OVERLOAD
PRETRAVEL----- .090 MIN	INDUCTIVE	.75 1.75
DIFFERENTIAL TRAVEL----- .050 MIN		
OVERTRAVEL----- .050 MIN		
TOTAL TRAVEL----- .165 MIN		

THIRD ANGLE PROJECTION

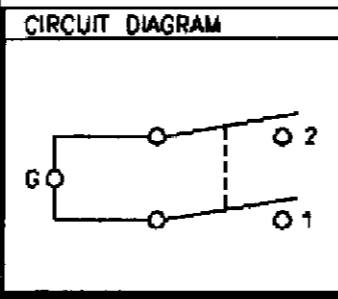
SCALE NONE

DO NOT SCALE PRINT

UNLESS OTHERWISE SPECIFIED TOLERANCES ARE

ONE PLACE (.0)	$\pm .030$
TWO PLACE (.00)	$\pm .015$
THREE PLACE (.000)	$\pm .005$
ANGLES	\pm

WEIGHT .32 LB MAX



NOTES

- 1 - SWITCH SEALED PER MIL-PRF-8805, SYMBOL 1
- 2 - TERMINAL HARDWARE PACKET FURNISHED UNASSEMBLED: 15PA308-JS INCLUDES BUSS BRACKET AND TERMINAL SCREWS
- 3 - MICRO SWITCH, MANUFACTURER'S CAGE CODE, CATALOG LISTING, MILITARY PART NUMBER AND DATE CODE IDENTIFIED ON SIDE OF SWITCH
- 4 - OPERATING TEMPERATURE RANGE: -40°C TO +85°C

ANSI Y14.5M-1982 APPLIES