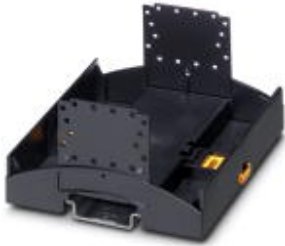


Mounting base housing - BC 107,6 UT HBUS BK - 2896270

Please be informed that the data shown in this PDF Document is generated from our Online Catalog. Please find the complete data in the user's documentation. Our General Terms of Use for Downloads are valid (<http://phoenixcontact.com/download>)




DIN rail housing for use in distribution boards in accordance with DIN 43880, Lower housing part with base latch, width: 107.6 mm, cross connection: DIN rail connector (optional), number of positions cross connector: 16, color: black (9005)

Your advantages

- ✔ Item is from the BC product range
- ✔ Conforms to DIN EN 43880
- ✔ Tool-free mounting
- ✔ Available in overall widths from one to nine width units (17.8 mm ... 161.6 mm)
- ✔ Inflammability class V0 according to UL 94
- ✔ Variety of connection technologies
- ✔ Can be mounted on the DIN rail or the wall
- ✔ Optional with bus connector for DIN rail mounting



Key Commercial Data

Packing unit	1 pc
Minimum order quantity	10 pc
GTIN	 4 046356 096720
GTIN	4046356096720
Weight per Piece (excluding packing)	72.000 g
Custom tariff number	85472000
Country of origin	Germany

Technical data

Item properties

Brief article description	Mounting base housing
---------------------------	-----------------------

Mounting base housing - BC 107,6 UT HBUS BK - 2896270

Technical data

Item properties

Type	BC 107,6 UT HBUS BK
Order No.	2896270
Housing type	DIN rail housing for use in distribution boards in accordance with DIN 43880
Housing series	BC
Type	Lower housing part with base latch
Max. IP code to attain	IP20
Mounting type	DIN rail mounting/wall mounting
Ventilation openings present	no

Dimensions

Width [w]	107.6 mm
Height [h]	89.7 mm
Depth [d]	48.9 mm

Material data

Color (RAL)	black (9005)
Flammability rating according to UL 94	V0
Housing material	Polycarbonate

Ambient conditions

Ambient temperature (storage/transport)	-40 °C ... 70 °C
Ambient temperature (assembly)	-5 °C ... 100 °C
Ambient temperature (operation)	-40 °C ... 105 °C (depending on power dissipation)
Relative humidity (storage/transport)	95 %

PCB data

Number of PCB holders	9
PCB thickness	1.4 mm ... 1.8 mm
Mounting position	parallel to the DIN rail
Type of PCB mount	Latching

Power dissipation, single housing at 20 °C

Ambient temperature	20 °C
Reduction factor	1
Mounting position	vertical
Power dissipation	13.08 W

Power dissipation, single housing at 30 °C

Ambient temperature	30 °C
Reduction factor	0.84

Mounting base housing - BC 107,6 UT HBUS BK - 2896270

Technical data

Power dissipation, single housing at 30 °C

Mounting position	vertical
Power dissipation	11 W

Power dissipation, single housing at 40 °C

Ambient temperature	40 °C
Reduction factor	0.72
Mounting position	vertical
Power dissipation	9.4 W

Power dissipation, single housing at 50 °C

Ambient temperature	50 °C
Reduction factor	0.6
Mounting position	vertical
Power dissipation	7.85 W

Power dissipation, single housing at 60 °C

Ambient temperature	60 °C
Reduction factor	0.48
Mounting position	vertical
Power dissipation	6.3 W

Mechanical strength/tumbling barrel

Specification	IEC 60068-2-31:2008-05
Height of fall	50 cm
Number of drop cycles	50

Vibration test

Specification	IEC 60068-2-6:2007-12
Frequency	10 - 150 - 10 Hz
Sweep speed	1 octave/min
Amplitude	0.15 mm (10 - 58.1 Hz)
Acceleration	2g (58.1 - 150 Hz)
Test duration per axis	2.5 h
Test directions	X-, Y- and Z-axis

Shock

Specification	IEC 60068-2-27:2008-02
Pulse shape	Half-sine
Acceleration	15g
Shock duration	11 ms
Number of shocks per direction	3

Mounting base housing - BC 107,6 UT HBUS BK - 2896270

Technical data

Shock

Test directions	X-, Y- and Z-axis (pos. and neg.)
-----------------	-----------------------------------

Test for assessing the risk of fire (glow wire)

Specification	DIN EN 60695-2-11 (VDE 0471-2-11):2014-11
Temperature	850 °C
Time of exposure	30 s

Degrees of protection provided by housings (IP code)

Specification	IEC 60529:1989-11 + AMD 1:1999-11 + AMD 2:2013-08
Result, degree of protection, IP code	IP20

General information

Type of note	Assembly instruction:
Note	Refer to the data sheet for the range in the download area.

Packaging information

Type of packaging	packed in cardboard
Pieces per package	10
Denomination packing units	Pcs.
Outer packaging type	Carton

Standards and regulations

Flammability rating according to UL 94	V0
--	----

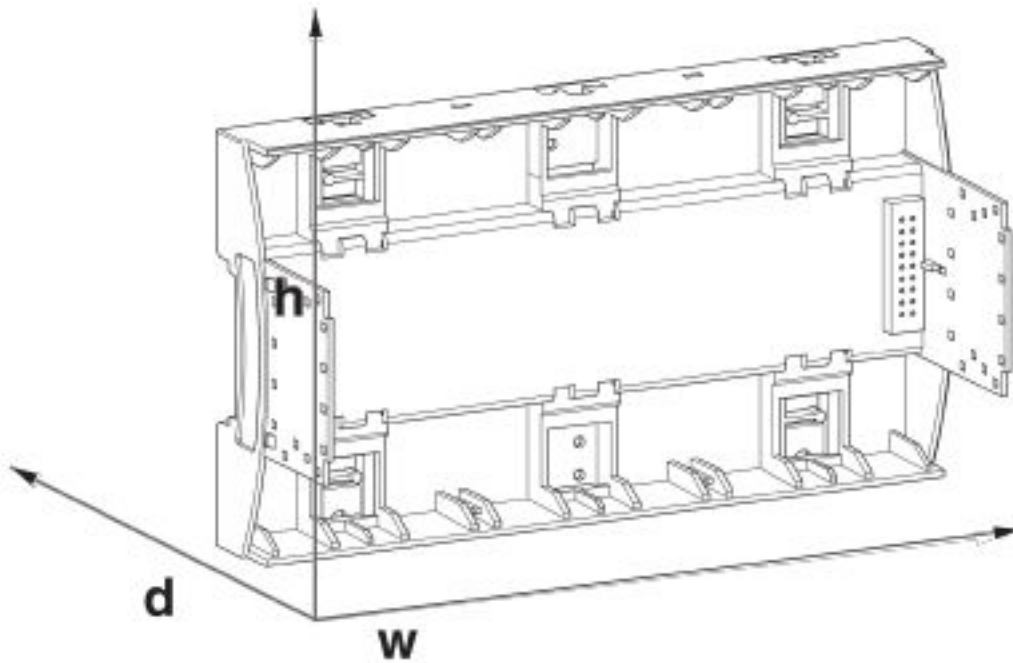
Environmental Product Compliance

China RoHS	Environmentally friendly use period: unlimited = EFUP-e
	No hazardous substances above threshold values

Drawings

Mounting base housing - BC 107,6 UT HBUS BK - 2896270

Dimensional drawing



Classifications

eCl@ss

eCl@ss 4.0	27180400
eCl@ss 4.1	27180400
eCl@ss 5.0	27180500
eCl@ss 5.1	27180500
eCl@ss 6.0	27180800
eCl@ss 7.0	27182702
eCl@ss 8.0	27182702
eCl@ss 9.0	27182702

ETIM

ETIM 2.0	EC001031
----------	----------

Mounting base housing - BC 107,6 UT HBUS BK - 2896270

Classifications

ETIM

ETIM 3.0	EC001031
ETIM 4.0	EC000886
ETIM 5.0	EC001031
ETIM 6.0	EC001031
ETIM 7.0	EC001031

UNSPSC

UNSPSC 6.01	31261501
UNSPSC 7.0901	31261501
UNSPSC 11	31261501
UNSPSC 12.01	31261501
UNSPSC 13.2	31261501

Approvals

Approvals


Approvals

UL Recognized / EAC

Ex Approvals

Approval details

UL Recognized		http://database.ul.com/cgi-bin/XYV/template/LISEXT/1FRAME/index.htm	FILE E 240868
---------------	---	---	---------------

EAC		B.01742
-----	---	---------

Accessories

Accessories

Mounting material

Mounting base housing - BC 107,6 UT HBUS BK - 2896270

Accessories

Base latch - FUSSRIEGEL 14,4 L30 SPERR OG - 2896998



Component housing, Base latch, width: 14.4 mm, color: orange (2003)

Necessary add-on products

Upper part of housing - BC 107,6 OT U11 KMGY - 2896076



DIN rail housing for use in distribution boards in accordance with DIN 43880, Upper housing part with vents, Installation depth connection technology: 11.1 mm, width: 107.6 mm, color: light gray (7035)

Upper part of housing - BC 107,6 OT U22 KMGY - 2896089



DIN rail housing for use in distribution boards in accordance with DIN 43880, Upper housing part with vents, Installation depth connection technology: 22.35 mm, width: 107.6 mm, color: light gray (7035)

Electronic housing - RPI-BC 107,6 DEV-KIT KMGY P10 - 2202875



DIN rail housing for Raspberry Pi computers (suitable for Raspberry Pi A+, B+, B2, B3); set consisting of upper part and PCB holder; housing according to DIN 43880

Upper part of housing - BC 107,6 OT U11 BK - 2200721



DIN rail housing for use in distribution boards in accordance with DIN 43880, Upper housing part with vents, Installation depth connection technology: 11.1 mm, width: 107.6 mm, color: black (9005)

Mounting base housing - BC 107,6 UT HBUS BK - 2896270

Accessories

Upper part of housing - BC 107,6 OT 2000 KMGY - 1050443



DIN rail housing for use in distribution boards in accordance with DIN 43880, Upper housing part with vents, width: 107.6 mm, color: light gray (7035)

Upper part of housing - BC 107,6 OT 1121 BK - 1108020



DIN rail housing for use in distribution boards in accordance with DIN 43880, Upper housing part with vents, width: 107.6 mm, color: black (9005)

Upper part of housing - BC 107,6 OT U11 RD3000 - 2203809



Installation component housing, Upper housing part with vents, width: 107.6 mm

Upper part of housing - BC 107,6 OT 1112 KMGY - 1086268



DIN rail housing for use in distribution boards in accordance with DIN 43880, Upper housing part with vents, width: 107.6 mm, color: light gray (7035)

Upper part of housing - BC 107,6 OT U11 BK VPE80 - 1006943



Installation component housing, Upper housing part with vents, width: 107.6 mm

Mounting base housing - BC 107,6 UT HBUS BK - 2896270

Accessories

Upper part of housing - BC 107,6 OT 0C0C0C0C KMGY - 1046365



DIN rail housing for use in distribution boards in accordance with DIN 43880, Upper housing part, width: 107.6 mm, color: light gray (7035)

Upper part of housing - BC 107,6 OT 0C0C0C0C BK - 1066143



DIN rail housing for use in distribution boards in accordance with DIN 43880, Upper housing part, width: 107.6 mm, color: black (9005)

Upper part of housing - BC 107,6 OT 0101 KMGY MOQ80 - 1065104



DIN rail housing for use in distribution boards in accordance with DIN 43880, Upper housing part with vents, width: 107.6 mm, color: light gray (7035)

Upper part of housing - BC 107,6 OT U22 BK - 2203763



Installation component housing, Upper housing part with vents, width: 107.6 mm, color: black (9005)

Upper part of housing - BC 107,6 OT 1121 KMGY - 2203260



DIN rail housing for use in distribution boards in accordance with DIN 43880, Upper housing part with vents, width: 107.6 mm, color: light gray (7035)

Mounting base housing - BC 107,6 UT HBUS BK - 2896270

Accessories

Upper part of housing - BC 107,6 OT 000C0C KMGY VPE80 - 1025418



DIN rail housing for use in distribution boards in accordance with DIN 43880, Upper housing part with vents, width: 107.6 mm, color: light gray (7035)

Upper part of housing - BC 107,6 OT 2121 KMGY - 1038850



DIN rail housing for use in distribution boards in accordance with DIN 43880, Upper housing part with vents, width: 107.6 mm, color: light gray (7035)

Upper part of housing - BC 107,6 OT 0121 KMGY - 2202301



DIN rail housing for use in distribution boards in accordance with DIN 43880, Upper housing part, width: 107.6 mm, color: light gray (7035)

Upper part of housing - BC 107,6 OT U22 GY 7045 - 2202269



Installation component housing, Upper housing part with vents, width: 107.6 mm

DIN rail bus connectors - HBUS 107,6-16P-1S BK - 2896306



DIN rail connector, number of positions: 16, pitch: 2.54 mm, color: jet black

Mounting base housing - BC 107,6 UT HBUS BK - 2896270

Accessories

Pin strip - PSTD 0,65X0,65/9-2,54 - 2200700



Pin strip, number of positions: 18, pitch: 2.54 mm

Additional products

DIN rail bus connectors - HBUS 107,6-16P-1S BK - 2896306



DIN rail connector, number of positions: 16, pitch: 2.54 mm, color: jet black