

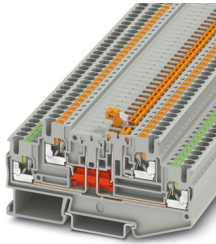
PTT 2,5-L/MT - Knife-disconnect terminal block



3210251

<https://www.phoenixcontact.com/pc/products/3210251>

Please be informed that the data shown in this PDF document is generated from our online catalog. Please find the complete data in the user documentation. Our general terms of use for downloads are valid.



Knife-disconnect terminal block, nom. voltage: 400 V, nominal current: 16 A, 1st and 2nd level, connection method: Push-in connection, Rated cross section: 2.5 mm², cross section: 0.14 mm² - 4 mm², mounting: NS 35/7,5, NS 35/15, color: gray

Your advantages

- The Push-in connection terminal blocks are characterized by the system features of the CLIPLINE complete system and by easy and tool-free wiring of conductors with ferrules or solid conductors
- The compact design and front connection enable wiring in a confined space
- Clear identification of the disconnect point, thanks to color highlighting
- Convenient separation of circuits, thanks to lever-type disconnect knife

Commercial data

Item number	3210251
Packing unit	50 pc
Minimum order quantity	50 pc
Product key	BE2231
GTIN	4046356863261
Weight per piece (including packing)	17.636 g
Weight per piece (excluding packing)	17.636 g
Customs tariff number	85369010
Country of origin	PL

PTT 2,5-L/MT - Knife-disconnect terminal block



3210251

<https://www.phoenixcontact.com/pc/products/3210251>

Technical data

Product properties

Product type	Disconnect terminal block
Number of connections	4
Number of rows	2
Potentials	2

Insulation characteristics

Overvoltage category	III
Degree of pollution	3

Electrical properties

Rated surge voltage	6 kV
Maximum power dissipation for nominal condition	0.77 W

Connection data

Number of connections per level	2
Nominal cross section	2.5 mm ²

1st and 2nd level

Connection method	Push-in connection
Stripping length	8 mm ... 10 mm
Internal cylindrical gage	A3
Connection in acc. with standard	IEC 60947-7-1
Conductor cross-section rigid	0.14 mm ² ... 4 mm ²
Cross section AWG	26 ... 12 (converted acc. to IEC)
Conductor cross-section flexible	0.14 mm ² ... 2.5 mm ²
Conductor cross-section, flexible [AWG]	26 ... 14 (converted acc. to IEC)
Conductor cross-section flexible (ferrule without plastic sleeve)	0.14 mm ² ... 2.5 mm ²
Flexible conductor cross-section (ferrule with plastic sleeve)	0.14 mm ² ... 2.5 mm ²
2 conductors with the same cross section, flexible, with TWIN ferrule with plastic sleeve	0.5 mm ²
Nominal current	16 A
Maximum load current	16 A (with 4 mm ² conductor cross-section)
Nominal voltage	400 V
Nominal cross section	2.5 mm ²
Cross section AWG	26 ... 12 (converted acc. to IEC)

1st and 2nd level Connection cross sections directly pluggable

Conductor cross-section rigid	0.34 mm ² ... 4 mm ²
Conductor cross-section flexible (ferrule without plastic sleeve)	0.34 mm ² ... 2.5 mm ²
Flexible conductor cross-section (ferrule with plastic sleeve)	0.34 mm ² ... 2.5 mm ²

Dimensions

PTT 2,5-L/MT - Knife-disconnect terminal block



3210251

<https://www.phoenixcontact.com/pc/products/3210251>

Width	5.2 mm
End cover width	0.8 mm
Height	92.4 mm
Depth	45.8 mm
Depth on NS 35/7,5	47.4 mm
Depth on NS 35/15	54.9 mm

Material specifications

Color	gray (RAL 7042)
Flammability rating according to UL 94	V0
Insulating material group	I
Insulating material	PA
Static insulating material application in cold	-60 °C
Temperature index of insulation material (DIN EN 60216-1 (VDE 0304-21))	125 °C
Relative insulation material temperature index (Elec., UL 746 B)	130 °C
Fire protection for rail vehicles (DIN EN 45545-2) R22	HL 1 - HL 3
Fire protection for rail vehicles (DIN EN 45545-2) R23	HL 1 - HL 3
Fire protection for rail vehicles (DIN EN 45545-2) R24	HL 1 - HL 3
Fire protection for rail vehicles (DIN EN 45545-2) R26	HL 1 - HL 3
Calorimetric heat release NFPA 130 (ASTM E 1354)	27,5 MJ/kg
Surface flammability NFPA 130 (ASTM E 162)	passed
Specific optical density of smoke NFPA 130 (ASTM E 662)	passed
Smoke gas toxicity NFPA 130 (SMP 800C)	passed

Electrical tests

Surge voltage test

Test voltage setpoint	7.3 kV
Result	Test passed

Temperature-rise test

Requirement temperature-rise test	Increase in temperature \leq 45 K
Result	Test passed
Short-time withstand current 2.5 mm ²	0.3 kA
Result	Test passed

Power-frequency withstand voltage

Test voltage setpoint	1.89 kV
Result	Test passed

Mechanical properties

Mechanical data

Open side panel	Yes
-----------------	-----

Mechanical tests

PTT 2,5-L/MT - Knife-disconnect terminal block



3210251

<https://www.phoenixcontact.com/pc/products/3210251>

Mechanical strength

Result	Test passed
--------	-------------

Attachment on the carrier

DIN rail/fixing support	NS 35
Test force setpoint	1 N
Result	Test passed

Test for conductor damage and slackening

Rotation speed	10 rpm
Revolutions	135
Conductor cross-section/weight	0.14 mm ² / 0.2 kg
	2.5 mm ² / 0.7 kg
	4 mm ² / 0.9 kg
Result	Test passed

Environmental and real-life conditions

Aging

Temperature cycles	192
Result	Test passed

Needle-flame test

Time of exposure	30 s
Result	Test passed

Oscillation/broadband noise

Specification	DIN EN 50155 (VDE 0115-200):2008-03
Spectrum	Long life test category 2, bogie-mounted
Frequency	$f_1 = 5 \text{ Hz}$ to $f_2 = 250 \text{ Hz}$
ASD level	6.12 (m/s ²) ² /Hz
Acceleration	3.12g
Test duration per axis	5 h
Test directions	X-, Y- and Z-axis
Result	Test passed

Shocks

Specification	DIN EN 50155 (VDE 0115-200):2008-03
Pulse shape	Half-sine
Acceleration	30g
Shock duration	18 ms
Number of shocks per direction	3
Test directions	X-, Y- and Z-axis (pos. and neg.)
Result	Test passed

Ambient conditions

Ambient temperature (operation)	-60 °C ... 110 °C (Operating temperature range incl. self-heating;
---------------------------------	--

PTT 2,5-L/MT - Knife-disconnect terminal block



3210251

<https://www.phoenixcontact.com/pc/products/3210251>

	for max. short-term operating temperature, see RTI Elec.)
Ambient temperature (storage/transport)	-25 °C ... 60 °C (for a short time, not exceeding 24 h, -60 °C to +70 °C)
Ambient temperature (assembly)	-5 °C ... 70 °C
Ambient temperature (actuation)	-5 °C ... 70 °C
Permissible humidity (operation)	20 % ... 90 %
Permissible humidity (storage/transport)	30 % ... 70 %

Standards and regulations

Connection in acc. with standard	IEC 60947-7-1
----------------------------------	---------------

Mounting

Mounting type	NS 35/7,5
	NS 35/15

PTT 2,5-L/MT - Knife-disconnect terminal block

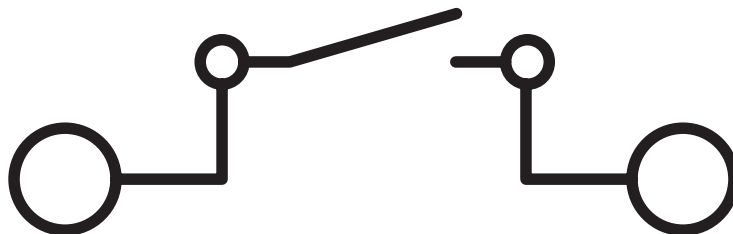


3210251

<https://www.phoenixcontact.com/pc/products/3210251>

Drawings

Circuit diagram



PTT 2,5-L/MT - Knife-disconnect terminal block




3210251


<https://www.phoenixcontact.com/pc/products/3210251>

Approvals

To download certificates, visit the product detail page: <https://www.phoenixcontact.com/pc/products/3210251>

 CSA Approval ID: 2030668				
	Nominal voltage U_N	Nominal current I_N	Cross section AWG	Cross section mm^2
B	300 V	16 A	26 - 12	-
C	300 V	16 A	26 - 12	-

 EAC Approval ID: RU C-DE.BL08.B.00644				
---	--	--	--	--

 EAC Approval ID: KZ7500651131219505				
---	--	--	--	--

PTT 2,5-L/MT - Knife-disconnect terminal block



3210251

<https://www.phoenixcontact.com/pc/products/3210251>

Classifications

ECLASS

ECLASS-13.0	27250108
ECLASS-15.0	27250108

ETIM

ETIM 9.0	EC000902
----------	----------

UNSPSC

UNSPSC 21.0	39121400
-------------	----------

PTT 2,5-L/MT - Knife-disconnect terminal block



3210251

<https://www.phoenixcontact.com/pc/products/3210251>

Environmental product compliance

EU RoHS

Fulfills EU RoHS substance requirements	Yes, No exemptions
---	--------------------

China RoHS

Environment friendly use period (EFUP)	EFUP-E
	No hazardous substances above the limits

EU REACH SVHC

REACH candidate substance (CAS No.)	No substance above 0.1 wt%
-------------------------------------	----------------------------

PTT 2,5-L/MT - Knife-disconnect terminal block



3210251

<https://www.phoenixcontact.com/pc/products/3210251>

Accessories

ATP-STTB 4 - Partition plate

3030747

<https://www.phoenixcontact.com/pc/products/3030747>

Partition plate, depth: 53 mm, width: 2 mm, height: 88.7 mm, color: gray

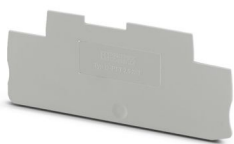


D-PTT 2,5-2MT-0,8 - End cover

3210300

<https://www.phoenixcontact.com/pc/products/3210300>

End cover, depth: 39.5 mm, width: 0.8 mm, height: 92.4 mm, color: gray



PTT 2,5-L/MT - Knife-disconnect terminal block



3210251

<https://www.phoenixcontact.com/pc/products/3210251>

D-PTT 2,5-2MT-0,8 OG - End cover

3210299

<https://www.phoenixcontact.com/pc/products/3210299>

End cover, depth: 39.5 mm, width: 0.8 mm, height: 92.4 mm, color: orange



S-MT - Switching lock

3247954

<https://www.phoenixcontact.com/pc/products/3247954>

Switching lock, depth: 23.1 mm, width: 3.5 mm, height: 10.5 mm, color: white



PTT 2,5-L/MT - Knife-disconnect terminal block



3210251

<https://www.phoenixcontact.com/pc/products/3210251>

CEC 2,5 - Filler plug

3062757

<https://www.phoenixcontact.com/pc/products/3062757>



Cover for conductor shaft, 10-pos., for spring cage terminal blocks (ST) and terminal blocks with push-in technology (PT) with a width of 5.2 mm

WS PT 2,5 - Warning label

1029026

<https://www.phoenixcontact.com/pc/products/1029026>



Warning label, yellow/black, labeled: Lightning flash, mounting type: plug in, for terminal block width: 5.2 mm

PTT 2,5-L/MT - Knife-disconnect terminal block



3210251

<https://www.phoenixcontact.com/pc/products/3210251>

WS-DIO PT 2,5 - Warning label

1029037

<https://www.phoenixcontact.com/pc/products/1029037>



Warning label, yellow/black, labeled: Diode, mounting type: plug in, for terminal block width: 5.2 mm

LPO 2,5/E - Pick-off plug

3270516

<https://www.phoenixcontact.com/pc/products/3270516>



Pick-off plug, nom. voltage: 800 V, nominal current: 24 A, number of positions: 1, connection method: Push-in connection, Rated cross section: 2.5 mm², cross section: 0.14 mm²- 4 mm², color: gray

PTT 2,5-L/MT - Knife-disconnect terminal block



3210251

<https://www.phoenixcontact.com/pc/products/3210251>

LPO 2,5 - Pick-off plug

3270517

<https://www.phoenixcontact.com/pc/products/3270517>



Pick-off plug, nom. voltage: 800 V, nominal current: 24 A, number of positions: 1, connection method: Push-in connection, Rated cross section: 2.5 mm², cross section: 0.14 mm²- 4 mm², color: gray

LPS-5/E - Service connector

3270520

<https://www.phoenixcontact.com/pc/products/3270520>



Service connector, nom. voltage: 800 V, nominal current: 24 A, number of positions: 1, connection method: Push-in connection, Rated cross section: 2.5 mm², cross section: 0.14 mm²- 4 mm², color: red

PTT 2,5-L/MT - Knife-disconnect terminal block



3210251

<https://www.phoenixcontact.com/pc/products/3210251>

LPS-5 - Service connector

3270521

<https://www.phoenixcontact.com/pc/products/3270521>



Service connector, nom. voltage: 800 V, nominal current: 24 A, number of positions: 1, connection method: Push-in connection, Rated cross section: 2.5 mm², cross section: 0.14 mm²- 4 mm², color: red

NS 35/ 7,5 PERF 2000MM - DIN rail perforated

0801733

<https://www.phoenixcontact.com/pc/products/0801733>



DIN rail perforated, Pack of 25 (50 m), acc. to EN 60715, material: Steel, galvanized, passivated with a thick layer, Standard profile, color: silver

PTT 2,5-L/MT - Knife-disconnect terminal block



3210251

<https://www.phoenixcontact.com/pc/products/3210251>

NS 35/ 7,5 UNPERF 2000MM - DIN rail, unperforated

0801681

<https://www.phoenixcontact.com/pc/products/0801681>



DIN rail, unperforated, Pack of 25 (50 m), acc. to EN 60715, material: Steel, galvanized, passivated with a thick layer, Standard profile, color: silver-colored

NS 35/ 7,5 WH PERF 2000MM - DIN rail perforated

1204119

<https://www.phoenixcontact.com/pc/products/1204119>



DIN rail perforated, Pack of 25 (50 m), acc. to EN 60715, material: Steel, galvanized, white passivated, Standard profile, color: silver-colored

PTT 2,5-L/MT - Knife-disconnect terminal block



3210251

<https://www.phoenixcontact.com/pc/products/3210251>

NS 35/ 7,5 WH UNPERF 2000MM-VPE 10 - DIN rail, unperforated

1204122

<https://www.phoenixcontact.com/pc/products/1204122>



DIN rail, unperforated, Pack of 10 (20 m), acc. to EN 60715, material: Steel, galvanized, white passivated, Standard profile, color: silver-colored

NS 35/ 7,5 AL UNPERF 2000MM - DIN rail, unperforated

0801704

<https://www.phoenixcontact.com/pc/products/0801704>



DIN rail, unperforated, Pack of 25 (50 m), acc. to EN 60715, material: Aluminum, uncoated, Standard profile, color: silver-colored

PTT 2,5-L/MT - Knife-disconnect terminal block

3210251

<https://www.phoenixcontact.com/pc/products/3210251>

NS 35/ 7,5 ZN PERF 2000MM - DIN rail perforated

1206421

<https://www.phoenixcontact.com/pc/products/1206421>



DIN rail perforated, Pack of 25 (50 m), acc. to EN 60715, material: Steel, galvanized, Standard profile, color: silver-colored

NS 35/ 7,5 ZN UNPERF 2000MM - DIN rail, unperforated

1206434

<https://www.phoenixcontact.com/pc/products/1206434>



DIN rail, unperforated, Pack of 25 (50 m), acc. to EN 60715, material: Steel, galvanized, Standard profile, color: silver-colored

PTT 2,5-L/MT - Knife-disconnect terminal block

3210251

<https://www.phoenixcontact.com/pc/products/3210251>



NS 35/ 7,5 CU UNPERF 2000MM-VPE 10 - DIN rail, unperforated

0801762

<https://www.phoenixcontact.com/pc/products/0801762>



DIN rail, unperforated, Pack of 10 (20 m), acc. to EN 60715, material: Copper, uncoated, Standard profile, color: copper-colored

NS 35/ 7,5 CAP - End cap

1206560

<https://www.phoenixcontact.com/pc/products/1206560>

DIN rail end piece, for DIN rail NS 35/7.5



PTT 2,5-L/MT - Knife-disconnect terminal block

3210251

<https://www.phoenixcontact.com/pc/products/3210251>

NS 35/15 PERF 2000MM - DIN rail perforated

1201730

<https://www.phoenixcontact.com/pc/products/1201730>



DIN rail perforated, Pack of 25 (50 m), similar to EN 60715, material: Steel, galvanized, passivated with a thick layer, Standard profile, color: silver-colored

NS 35/15 UNPERF 2000MM - DIN rail, unperforated

1201714

<https://www.phoenixcontact.com/pc/products/1201714>



DIN rail, unperforated, Pack of 25 (50 m), similar to EN 60715, material: Steel, galvanized, passivated with a thick layer, Standard profile, color: silver-colored

PTT 2,5-L/MT - Knife-disconnect terminal block

3210251

<https://www.phoenixcontact.com/pc/products/3210251>



NS 35/15 WH PERF 2000MM - DIN rail perforated

0806602

<https://www.phoenixcontact.com/pc/products/0806602>



DIN rail perforated, Pack of 25 (50 m), similar to EN 60715, material: Steel, galvanized, white passivated, Standard profile, color: white

NS 35/15 WH UNPERF 2000MM-VPE 10 - DIN rail, unperforated

1204135

<https://www.phoenixcontact.com/pc/products/1204135>



DIN rail, unperforated, Pack of 10 (20 m), similar to EN 60715, material: Steel, galvanized, white passivated, Standard profile, color: silver-colored

PTT 2,5-L/MT - Knife-disconnect terminal block



3210251

<https://www.phoenixcontact.com/pc/products/3210251>

NS 35/15 AL UNPERF 2000MM - DIN rail, unperforated

1201756

<https://www.phoenixcontact.com/pc/products/1201756>



DIN rail, unperforated, similar to EN 60715, material: Aluminum, uncoated, Standard profile, color: silver-colored

NS 35/15 ZN PERF 2000MM - DIN rail perforated

1206599

<https://www.phoenixcontact.com/pc/products/1206599>



DIN rail perforated, Pack of 25 (50 m), similar to EN 60715, material: Steel, galvanized, Standard profile, color: silver-colored

PTT 2,5-L/MT - Knife-disconnect terminal block

3210251

<https://www.phoenixcontact.com/pc/products/3210251>

NS 35/15 ZN UNPERF 2000MM - DIN rail, unperforated

1206586

<https://www.phoenixcontact.com/pc/products/1206586>



DIN rail, unperforated, Pack of 25 (50 m), similar to EN 60715, material: Steel, galvanized, Standard profile, color: silver-colored

NS 35/15 CU UNPERF 2000MM-VPE 10 - DIN rail, unperforated

1201895

<https://www.phoenixcontact.com/pc/products/1201895>



DIN rail, unperforated, Pack of 10 (20 m), similar to EN 60715, material: Copper, uncoated, Standard profile, color: copper-colored

PTT 2,5-L/MT - Knife-disconnect terminal block

3210251

<https://www.phoenixcontact.com/pc/products/3210251>

NS 35/15 CAP - End cap

1206573

<https://www.phoenixcontact.com/pc/products/1206573>

DIN rail end piece, for DIN rail NS 35/15



ZBF 5:UNBEDRUCKT - Zack Marker strip, flat

0808642

<https://www.phoenixcontact.com/pc/products/0808642>



Zack Marker strip, flat, Strip, white, unmarked, can be labeled with: PLOTMARK, CMS-P1-PLOTTER, mounting type: latching, for terminal block width: 5 mm, Number of individual labels: 10, text field height: 5.15 mm, text field width: 5.15 mm

PTT 2,5-L/MT - Knife-disconnect terminal block

3210251

<https://www.phoenixcontact.com/pc/products/3210251>

ZBF 5 CUS - Zack Marker strip, flat

0825025

<https://www.phoenixcontact.com/pc/products/0825025>



Zack Marker strip, flat, can be ordered: Strip, white, labeled according to customer specifications, mounting type: snap into flat marker groove, for terminal block width: 5 mm, Number of individual labels: 10, text field height: 5.15 mm, text field width: 5.15 mm

ZBF 5,LGS:FORTL.ZAHLEN - Zack Marker strip, flat

0808671

<https://www.phoenixcontact.com/pc/products/0808671>



Zack Marker strip, flat, Strip, white, labeled, printed horizontally: consecutive numbers 1 ... 10, 11 ... 20, etc. up to 491 ... 500, mounting type: latching, for terminal block width: 5 mm, Number of individual labels: 10, text field height: 5.15 mm, text field width: 5.15 mm

PTT 2,5-L/MT - Knife-disconnect terminal block

3210251

<https://www.phoenixcontact.com/pc/products/3210251>

ZBF 5,QR:FORTL.ZAHLEN - Zack Marker strip, flat

0808697

<https://www.phoenixcontact.com/pc/products/0808697>



Zack Marker strip, flat, Strip, white, labeled, Printed vertically: consecutive numbers 1 ... 10, 11 ... 20, etc. up to 91 ... 100, mounting type: latching, for terminal block width: 5 mm, Number of individual labels: 10, text field height: 5.15 mm, text field width: 5.15 mm

ZBF 5,LGS:GERADE ZAHLEN - Zack Marker strip, flat

0810821

<https://www.phoenixcontact.com/pc/products/0810821>



Zack Marker strip, flat, Strip, white, labeled, printed horizontally: consecutive even numbers 2 ... 20, 22 ... 40, etc. up to 82 ... 100, mounting type: latching, for terminal block width: 5 mm, Number of individual labels: 10, text field height: 5.15 mm, text field width: 5.15 mm

PTT 2,5-L/MT - Knife-disconnect terminal block



3210251

<https://www.phoenixcontact.com/pc/products/3210251>

ZBF 5,LGS:UNGERADE ZAHLEN - Zack Marker strip, flat

0810863

<https://www.phoenixcontact.com/pc/products/0810863>

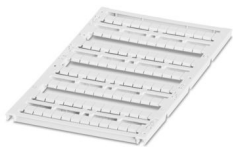


Zack Marker strip, flat, Strip, white, labeled, printed horizontally: Odd numbers 1 - 19, 21 - 39, etc. up to 81 - 99, mounting type: latching, for terminal block width: 5 mm, Number of individual labels: 10, text field height: 5.15 mm, text field width: 5.15 mm

UC-TMF 5 - Marker for terminal blocks

0818153

<https://www.phoenixcontact.com/pc/products/0818153>



Marker for terminal blocks, Sheet, white, unmarked, can be labeled with: BLUEMARK E.CARD, BLUEMARK ID COLOR, BLUEMARK ID, BLUEMARK CLED, PLOTMARK, CMS-P1-PLOTTER, mounting type: latching, for terminal block width: 5.2 mm, Number of individual labels: 96, text field height: 5.1 mm, text field width: 4.6 mm

PTT 2,5-L/MT - Knife-disconnect terminal block



3210251

<https://www.phoenixcontact.com/pc/products/3210251>

UC-TMF 5 CUS - Marker for terminal blocks

0824638

<https://www.phoenixcontact.com/pc/products/0824638>



Marker for terminal blocks, can be ordered: by sheet, white, labeled according to customer specifications, mounting type: snap into flat marker groove, for terminal block width: 5.2 mm, Number of individual labels: 96, text field height: 5.1 mm, text field width: 4.6 mm

UCT-TMF 5 - Marker for terminal blocks

0828744

<https://www.phoenixcontact.com/pc/products/0828744>



Marker for terminal blocks, Sheet, white, unmarked, can be labeled with: BLUEMARK E.CARD, BLUEMARK ID COLOR, BLUEMARK ID, BLUEMARK CLED, THERMOMARK PRIME 2.0, THERMOMARK PRIME, THERMOMARK CARD 2.0, THERMOMARK CARD, TOPMARK NEO, TOPMARK LASER, mounting type: latching, for terminal block width: 5.2 mm, Number of individual labels: 72, text field height: 4.7 mm, text field width: 4.4 mm

PTT 2,5-L/MT - Knife-disconnect terminal block

3210251

<https://www.phoenixcontact.com/pc/products/3210251>



UCT-TMF 5 CUS - Marker for terminal blocks

0829658

<https://www.phoenixcontact.com/pc/products/0829658>



Marker for terminal blocks, can be ordered: by sheet, white, labeled according to customer specifications, mounting type: snap into flat marker groove, for terminal block width: 5.2 mm, Number of individual labels: 72, text field height: 4.7 mm, text field width: 4.4 mm

MPS-MT - Test plug

0201744

<https://www.phoenixcontact.com/pc/products/0201744>



Test plug, with solder connection up to 1 mm² conductor cross-section, number of positions: 1, color: gray

PTT 2,5-L/MT - Knife-disconnect terminal block



3210251

<https://www.phoenixcontact.com/pc/products/3210251>

MPS-IH WH - Insulating sleeve

0201663

<https://www.phoenixcontact.com/pc/products/0201663>

Insulating sleeve, color: white



MPS-IH RD - Insulating sleeve

0201676

<https://www.phoenixcontact.com/pc/products/0201676>

Insulating sleeve, color: red



PTT 2,5-L/MT - Knife-disconnect terminal block



3210251

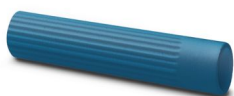
<https://www.phoenixcontact.com/pc/products/3210251>

MPS-IH BU - Insulating sleeve

0201689

<https://www.phoenixcontact.com/pc/products/0201689>

Insulating sleeve, color: blue



MPS-IH YE - Insulating sleeve

0201692

<https://www.phoenixcontact.com/pc/products/0201692>

Insulating sleeve, color: yellow



PTT 2,5-L/MT - Knife-disconnect terminal block

3210251

<https://www.phoenixcontact.com/pc/products/3210251>

MPS-IH GN - Insulating sleeve

0201702

<https://www.phoenixcontact.com/pc/products/0201702>

Insulating sleeve, color: green



MPS-IH GY - Insulating sleeve

0201728

<https://www.phoenixcontact.com/pc/products/0201728>

Insulating sleeve, color: gray



PTT 2,5-L/MT - Knife-disconnect terminal block

3210251

<https://www.phoenixcontact.com/pc/products/3210251>

MPS-IH BK - Insulating sleeve

0201731

<https://www.phoenixcontact.com/pc/products/0201731>

Insulating sleeve, color: black



ISH 2,5/0,2 - Insulating sleeve

3002843

<https://www.phoenixcontact.com/pc/products/3002843>

Insulating sleeve, color: white



PTT 2,5-L/MT - Knife-disconnect terminal block

3210251

<https://www.phoenixcontact.com/pc/products/3210251>

ISH 2,5/0,5 - Insulating sleeve

3002856

<https://www.phoenixcontact.com/pc/products/3002856>



Insulating sleeve, color: gray

ISH 2,5/1,0 - Insulating sleeve

3002869

<https://www.phoenixcontact.com/pc/products/3002869>



Insulating sleeve, color: black

PTT 2,5-L/MT - Knife-disconnect terminal block

3210251

<https://www.phoenixcontact.com/pc/products/3210251>

PAI-4-FIX-5/6 BU - Test adapter

3035975

<https://www.phoenixcontact.com/pc/products/3035975>



4 mm test adapter, for terminal blocks with 5.2 mm and 6.2 mm pitch

PAI-4-FIX-5/6 OG - Test adapter

3035974

<https://www.phoenixcontact.com/pc/products/3035974>



4 mm test adapter, for terminal blocks with 5.2 mm and 6.2 mm pitch

PTT 2,5-L/MT - Knife-disconnect terminal block



3210251

<https://www.phoenixcontact.com/pc/products/3210251>

PAI-4-FIX-5/6 YE - Test adapter

3035977

<https://www.phoenixcontact.com/pc/products/3035977>



4 mm test adapter, for terminal blocks with 5.2 mm and 6.2 mm pitch

PAI-4-FIX-5/6 RD - Test adapter

3035976

<https://www.phoenixcontact.com/pc/products/3035976>



4 mm test adapter, for terminal blocks with 5.2 mm and 6.2 mm pitch

PTT 2,5-L/MT - Knife-disconnect terminal block



3210251

<https://www.phoenixcontact.com/pc/products/3210251>

PAI-4-FIX-5/6 GN - Test adapter

3035978

<https://www.phoenixcontact.com/pc/products/3035978>



4 mm test adapter, for terminal blocks with 5.2 mm and 6.2 mm pitch

PAI-4-FIX-5/6 BK - Test adapter

3035980

<https://www.phoenixcontact.com/pc/products/3035980>



4 mm test adapter, for terminal blocks with 5.2 mm and 6.2 mm pitch

PTT 2,5-L/MT - Knife-disconnect terminal block



3210251

<https://www.phoenixcontact.com/pc/products/3210251>

PAI-4-FIX-5/6 GY - Test adapter

3035982

<https://www.phoenixcontact.com/pc/products/3035982>



4 mm test adapter, for terminal blocks with 5.2 mm and 6.2 mm pitch

PAI-4-FIX-5/6 VT - Test adapter

3035979

<https://www.phoenixcontact.com/pc/products/3035979>



4 mm test adapter, for terminal blocks with 5.2 mm and 6.2 mm pitch

PTT 2,5-L/MT - Knife-disconnect terminal block



3210251

<https://www.phoenixcontact.com/pc/products/3210251>

PAI-4-FIX-5/6 BN - Test adapter

3035981

<https://www.phoenixcontact.com/pc/products/3035981>



4 mm test adapter, for terminal blocks with 5.2 mm and 6.2 mm pitch

PAI-4-FIX-5/6 WH - Test adapter

3035983

<https://www.phoenixcontact.com/pc/products/3035983>



4 mm test adapter, for terminal blocks with 5.2 mm and 6.2 mm pitch

PTT 2,5-L/MT - Knife-disconnect terminal block



3210251

<https://www.phoenixcontact.com/pc/products/3210251>

PS-5 - Test plug

3030983

<https://www.phoenixcontact.com/pc/products/3030983>



Test plug, Modular test plug, number of positions: 1, color: red

DP PS-5 - Spacer plate

3036725

<https://www.phoenixcontact.com/pc/products/3036725>



Spacer plate, depth: 29 mm, width: 5.2 mm, height: 22.4 mm, number of positions: 1, color: red

PTT 2,5-L/MT - Knife-disconnect terminal block

3210251

<https://www.phoenixcontact.com/pc/products/3210251>

PS-5/2,3MM RD - Test plug

3038723

<https://www.phoenixcontact.com/pc/products/3038723>



Test plug, number of positions: 1, color: red

SZF 1-0,6X3,5 - Screwdriver

1204517

<https://www.phoenixcontact.com/pc/products/1204517>



Actuation tool, for ST terminal blocks, also suitable for use as a bladed screwdriver, size: 0.6 x 3.5 x 100 mm, 2-component grip, with non-slip grip

PTT 2,5-L/MT - Knife-disconnect terminal block



3210251

<https://www.phoenixcontact.com/pc/products/3210251>

ST-BW - Actuation tool

1207608

<https://www.phoenixcontact.com/pc/products/1207608>

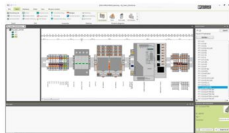
Actuation tool, for all 2.5 mm² - 4.0 mm² spring-cages



PROJECT COMPLETE - Software

1050453

<https://www.phoenixcontact.com/pc/products/1050453>



Intuitive planning and marking software for configuring terminal strips and for professional marking of marking materials for terminal blocks, conductors, cables, devices, and systems. The software is available for download

PTT 2,5-L/MT - Knife-disconnect terminal block

3210251

<https://www.phoenixcontact.com/pc/products/3210251>

CRIMPFOX CENTRUS 6S - Crimping pliers

1213144

<https://www.phoenixcontact.com/pc/products/1213144>



Crimping pliers, for uninsulated and insulated ferrules, DIN 46228 Part 1 and 4, from 0.14 mm² ... 6 mm², also for TWIN ferrules up to 2 x 4 mm², automatic cross section adjustment, lateral insertion, equipped with fall protection

CRIMPFOX CENTRUS 10S - Crimping pliers

1213154

<https://www.phoenixcontact.com/pc/products/1213154>



Crimping pliers, for uninsulated and insulated ferrules, DIN 46228 Part 1 and 4, from 0.14 mm² ... 10 mm², also for TWIN ferrules up to 2 x 4 mm², automatic cross section adjustment, lateral insertion, equipped with fall protection

PTT 2,5-L/MT - Knife-disconnect terminal block

3210251

<https://www.phoenixcontact.com/pc/products/3210251>

CRIMPFOX CENTRUS 6H - Crimping pliers

1213146

<https://www.phoenixcontact.com/pc/products/1213146>



Crimping pliers, for uninsulated and insulated ferrules, DIN 46228 Part 1 and 4, from 0.14 mm² ... 6 mm², also for TWIN ferrules up to 2 x 4 mm², automatic cross section adjustment, lateral insertion, equipped with fall protection

CRIMPFOX CENTRUS 10H - Crimping pliers

1213156

<https://www.phoenixcontact.com/pc/products/1213156>



Crimping pliers, for uninsulated and insulated ferrules, DIN 46228 Part 1 and 4, from 0.14 mm² ... 10 mm², also for TWIN ferrules up to 2 x 4 mm², automatic cross section adjustment, lateral insertion, equipped with fall protection

PTT 2,5-L/MT - Knife-disconnect terminal block

3210251

<https://www.phoenixcontact.com/pc/products/3210251>

CRIMPFOX 10S - Crimping pliers

1212045

<https://www.phoenixcontact.com/pc/products/1212045>



Crimping pliers, for ferrules without insulating collar according to DIN 46228 Part 1 and ferrules with insulating collar according to DIN 46228 Part 4, 0.14 mm² ... 10 mm², unlockable pressure lock, lateral entry

CRIMPFOX 6H - Crimping pliers

1212046

<https://www.phoenixcontact.com/pc/products/1212046>



Crimping pliers, for ferrules without insulating collar according to DIN 46228 Part 1 and ferrules with insulating collar according to DIN 46228 Part 4, 0.14 mm² ... 6 mm², unlockable pressure lock, lateral entry

PTT 2,5-L/MT - Knife-disconnect terminal block

3210251

<https://www.phoenixcontact.com/pc/products/3210251>

CRIMPFOX 2,5-M - Crimping pliers

1212719

<https://www.phoenixcontact.com/pc/products/1212719>



Crimping pliers, for ferrules without insulating collar according to DIN 46228 Part 1 and ferrules with insulating collar according to DIN 46228 Part 4, 0.25 mm² ... 2.5 mm², lateral entry, trapezoidal crimp

CRIMPFOX 6-M - Crimping pliers

1212720

<https://www.phoenixcontact.com/pc/products/1212720>



Crimping pliers, for ferrules without insulating collar according to DIN 46228 Part 1 and ferrules with insulating collar according to DIN 46228 Part 4, 0.25 mm² ... 6.0 mm², lateral entry, trapezoidal crimp

PTT 2,5-L/MT - Knife-disconnect terminal block

3210251

<https://www.phoenixcontact.com/pc/products/3210251>

CRIMPFOX 6 - Crimping pliers

1212034

<https://www.phoenixcontact.com/pc/products/1212034>



Crimping pliers, for ferrules without insulating collar according to DIN 46228 Part 1 and ferrules with insulating collar according to DIN 46228 Part 4, 0.25 mm² ... 6.0 mm², lateral entry, trapezoidal crimp

CRIMPFOX 6T - Crimping pliers

1212037

<https://www.phoenixcontact.com/pc/products/1212037>



Crimping pliers, for ferrules without insulating collar according to DIN 46228 Part 1 and ferrules with insulating collar according to DIN 46228 Part 4, 0.25 mm² ... 6 mm², lateral entry, trapezoidal crimp

PTT 2,5-L/MT - Knife-disconnect terminal block

3210251

<https://www.phoenixcontact.com/pc/products/3210251>

CRIMPFOX 6T-F - Crimping pliers

1212038

<https://www.phoenixcontact.com/pc/products/1212038>



Crimping pliers, for ferrules without insulating collar according to DIN 46228 Part 1 and ferrules with insulating collar according to DIN 46228 Part 4, 0.25 mm² ... 6 mm², front entry, trapezoidal crimp

CRIMPFOX 6S-F - Crimping pliers

1212043

<https://www.phoenixcontact.com/pc/products/1212043>



Crimping pliers, for ferrules without insulating collar according to DIN 46228 Part 1 and ferrules with insulating collar according to DIN 46228 Part 4, 0.5 mm² ... 6 mm², front entry, square crimp

PTT 2,5-L/MT - Knife-disconnect terminal block



3210251

<https://www.phoenixcontact.com/pc/products/3210251>

CRIMPFOX-M - Crimping pliers

1212072

<https://www.phoenixcontact.com/pc/products/1212072>



Basic pliers, for accommodating dies for a wide range of type of contacts

Phoenix Contact 2025 © - all rights reserved

<https://www.phoenixcontact.com>

PHOENIX CONTACT GmbH & Co. KG

Flachsmarktstraße 8

D-32825 Blomberg

+49 (0) 5235-3 00

info@phoenixcontact.com