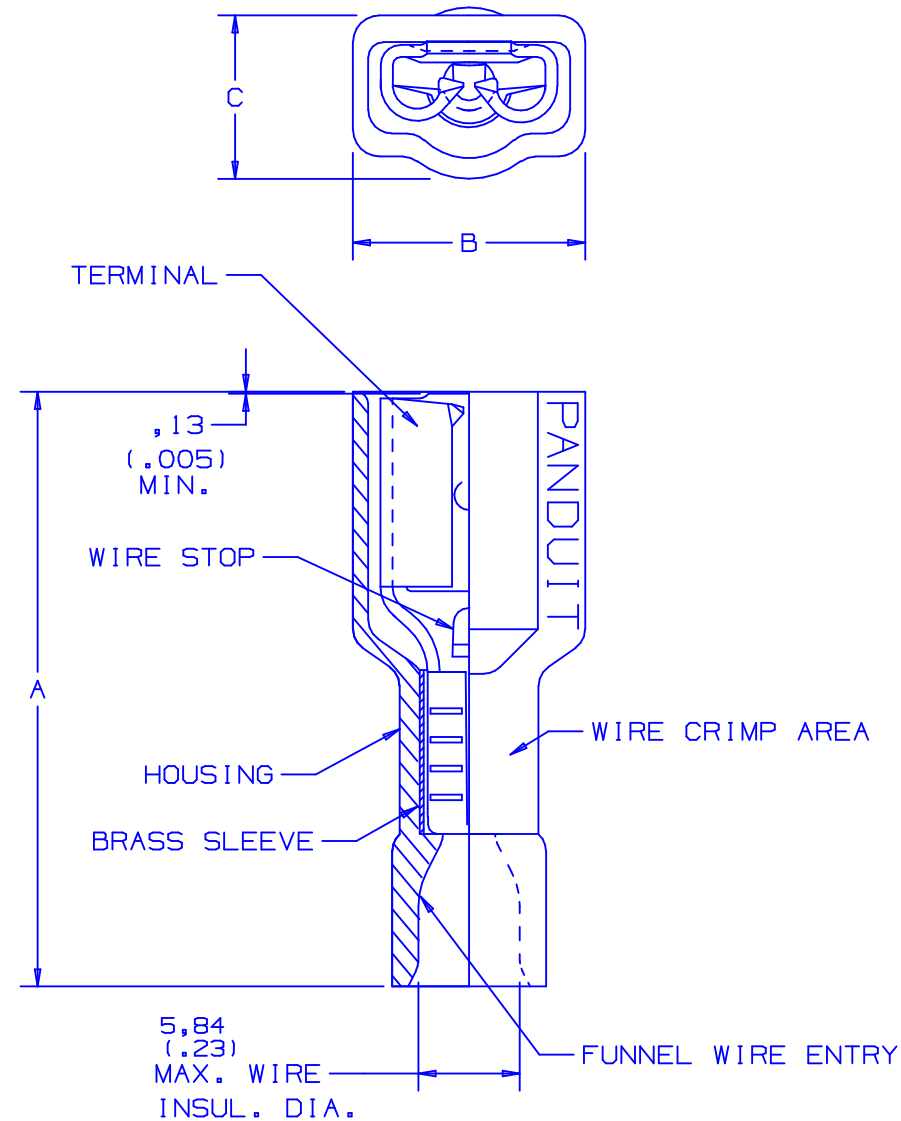


PART NUMBER		TAB SIZE	WIRE RANGE mm ²	DIMENSIONS mm		
PREFIX	PK			A ±,38	B ±,25	C ±,25
DMNF6-63F1	-L -D	6,3 X 0,8 (.250 X .032)	4,0-6,0 (12-10)	24,4 (.96)	8,9 (.35)	6,9 (.27)

NOTES:

- USED FOR:
 - A. 600V MAX. VOLTAGE RATING.
 - B. 105° C (221°F) MAX. TEMP. RATING
 - C. STRANDED COPPER WIRE ONLY.
- PACKAGE QTY:
 - A. STD: L=50
 - B. BULK: D=500
- MATERIAL:
 - A. STAMPING: CDA 260 BRASS, TIN PLATED
 - B. HOUSING: TYPE 6/6 NYLON, YELLOW
- WIRE STRIP LENGTH: $9,5 \begin{smallmatrix} +,8 \\ -0 \end{smallmatrix}$ ($3/8 \begin{smallmatrix} +1/32 \\ -0 \end{smallmatrix}$)
- FIRST INSERTION FORCE: 53N (12 LB.) MAX
FIRST WITHDRAWAL FORCE: 53N (12 LB.) MAX
27N (6 LB.) MIN
- INSTALLATION TOOLS: REF. DWGS.
A41522, A41523, A41524, A41525
- DIMENSIONS IN BRACKETS ARE IN INCHES OR AWG.



A41507_04

04	7/03	KLFU		ADDED INTERNAL SERRATIONS WIRE RANGE 2,5 WAS 4,0			
03	10/97	TM	WJB	CHANGED DECIMAL POINTS TO COMMAS	6433	LA	DH
02	4-94	SM	JJ	REMOVED CURL FLOOR SLOTS	02215	LA	KS
01	1/92	BK	RS	#6 WAS A41511, ADDED COPPER TO # 1c CHANGED COMMAS TO PERIODS AND KG TO N	00765	LA	KS
REV	DATE	BY	CHK	DESCRIPTION	ECN #	CUST	PM

PANDUIT CORP.

TINLEY PARK, ILLINOIS

4,0 -6,0 mm²; 6,3 TAB
METRIC FULLY INSULATED FEMALE DISCONNECT

DRAWN BY	CHK'D	SCALE	DRAWING NO./CAD FILENAME
JMV	LSM	NONE	A41507