

ACCELERATE®

(0.635 mm) .025"

ARF6 SERIES

RUGGED VERTICAL SLIM SOCKET

ARF6-16-L-D-A-K-TR



ARF6-08-L-D-A-K-TR



SPECIFICATIONS

For complete specifications see www.samtec.com?ARF6

Insulator Material:

LCP, Black

Contact Material:

Copper Alloy

Shield Material:

Phosphor Bronze

Plating:

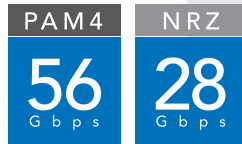
Au or Sn over

50 μ" (1.27 μm) Ni

Operating Temp Range:

-40 °C to +125 °C

Mates with:
ARC6



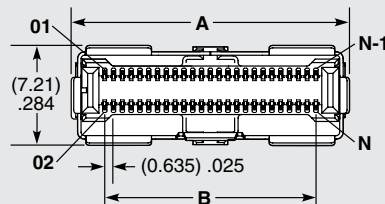
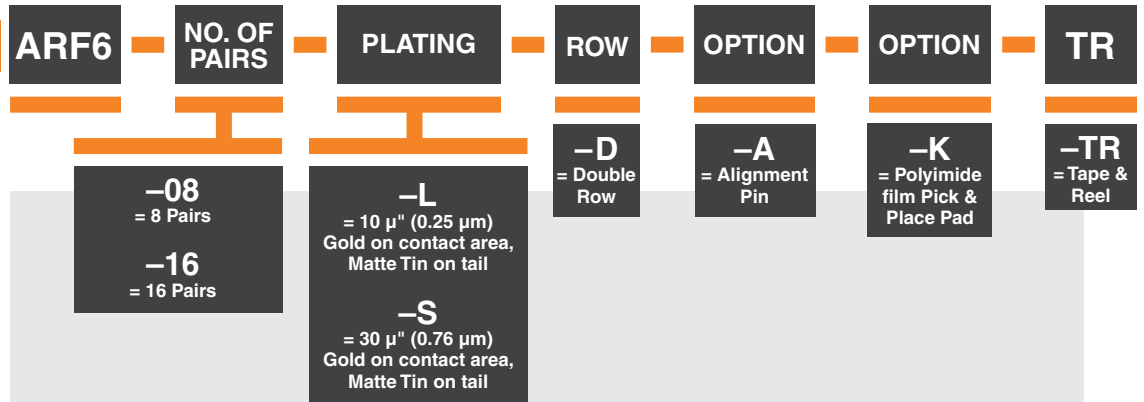
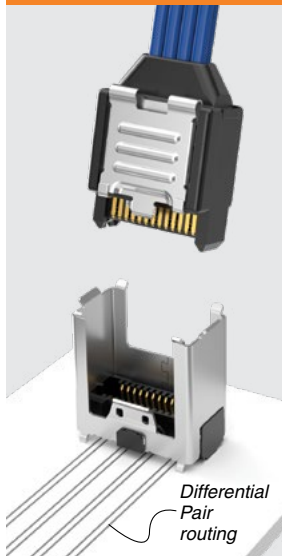
High-density 2-row design

8 and 16 pair configurations

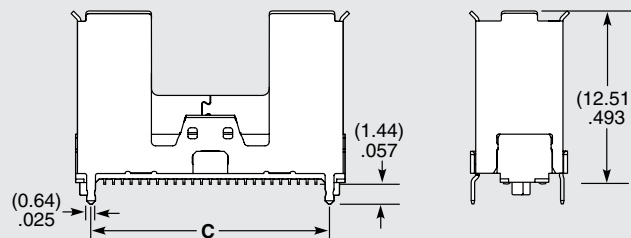
Rugged metal latching and shielding

Rugged through-hole reflowable weld tab

APPLICATION



NO. OF PAIRS	A	B	C	N	N-1
-08	(12.46) .491	(7.62) .300	(9.59) .378	26	25
-16	(20.08) .791	(15.24) .600	(17.21) .678	50	49



ARF6-16-L-D-A SHOWN

Notes:

Tape & Reel packaging and K-Dot are standard.

Some sizes, styles and options are non-standard, non-returnable.

Due to technical progress, all designs, specifications and components are subject to change without notice.

WWW.SAMTEC.COM

All parts within this catalog are built to Samtec's specifications.

Customer specific requirements must be approved by Samtec and identified in a Samtec customer-specific drawing to apply.