

**Industrial Ethernet
IE-M12-COUP**

Weidmüller Interface GmbH & Co. KG
Klingenbergstraße 26
D-32758 Detmold
Germany
Fon: +49 5231 14-0
Fax: +49 5231 14-292083
www.weidmueller.com



M12 panel feed-through, IP67

General ordering data

Type	IE-M12-COUP
Order No.	8901640000
Version	Coupling, M12, M12, Cat.5 (ISO/IEC 11801), IP67
GTIN (EAN)	4032248658206
Qty.	1 pc(s).

Creation date April 21, 2020 11:59:56 AM CEST

Catalogue status 17.04.2020 / We reserve the right to make technical changes.

**Industrial Ethernet
IE-M12-COUP**

Weidmüller Interface GmbH & Co. KG
 Klingenbergstraße 26
 D-32758 Detmold
 Germany
 Fon: +49 5231 14-0
 Fax: +49 5231 14-292083
 www.weidmueller.com

Technical data**Dimensions and weights**

Net weight	36 g
------------	------

Temperatures

Operating temperature, max.	60 °C	Operating temperature, min.	-5 °C
Operating temperature	-5 °C...60 °C		

Environmental Product Compliance

REACH SVHC	Lead 7439-92-1
------------	----------------

General Info

Connection 1	M12	Connection 2	M12
Description of article	Coupling	Configuration	M12 socket to M12 socket
Housing main material	Polyamide, Brass, nickel-plated	Category	Cat.5 (ISO/IEC 11801)
Connection thread	M12	Shielding	360° shield contact
Protection degree	IP67		

General standards

Connector standard	IEC 61076-2-101
--------------------	-----------------

Classifications

ETIM 6.0	EC002925	ETIM 7.0	EC002925
eClass 9.0	27-44-01-06	eClass 9.1	27-44-03-90
eClass 10.0	27-44-01-06	UNSPSC	30-21-18-14

Approvals

Approvals



ROHS	Conform
------	---------

Downloads

Approval/Certificate/Document of Conformity	GOST Approval PROFINET Manufacturer's Declaration
Brochure/Catalogue	CAT 9 IETH 18/19 EN FL FIELDWIRING EN PI PROFINET CABLING EN
Engineering Data	WSCAD
User Documentation	MAN IE GUIDE DE MAN IE GUIDE EN

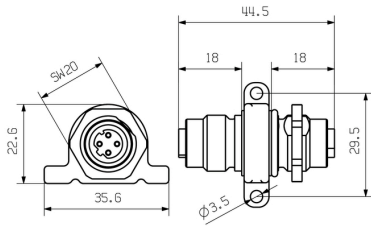
Data sheet

**Industrial Ethernet
IE-M12-COUP**

Weidmüller Interface GmbH & Co. KG
Klingenbergstraße 26
D-32758 Detmold
Germany
Fon: +49 5231 14-0
Fax: +49 5231 14-292083
www.weidmueller.com

Drawings

Dimensioned drawing



Dimensioned drawing

